

VOLUME 21
NUMBER 4
MAY-JUNE 2019

DEMOLITION &

d&r

RECYCLING INTERNATIONAL

A KHL Group

www.demolitionworld.com



SHOW GUIDE:
Plantworx

Dust control

Compact
crushing

d&r
100

The world's largest demolition contractors

FASTER TEAR DOWNS



KNOCK DOWN BUILDINGS AND FLATTEN OBSTACLES EFFORTLESSLY WITH LIUGONG'S POWERFUL LINE OF DEMOLITION MACHINES. WITH OUR TOP OF THE LINE PROTECTION FEATURES YOU WILL BE PROTECTED FROM THE CONSTANT HARSHNESS OF THE JOBSITE. POWER AND FLEXIBILITY, A HUGE SELECTION OF MACHINES AND ATTACHMENTS TO MEET YOUR DEMOLITION NEEDS AND THE SPECIFICS OF YOUR JOB.

WWW.LIUGONG.COM

 **LIUGONG**

TOUGH WORLD. TOUGH EQUIPMENT.

KHL OFFICES

UNITED KINGDOM (HEAD OFFICE)

Southfields, Southview Road,
Wadhurst, East Sussex TN5 6TP, UK.
Tel: +44 (0)1892 784088
Fax: +44 (0)1892 784086
www.khl.com

USA OFFICE

KHL Group Americas LLC
3726 E. Ember Glow Way,
Phoenix, AZ 85050, USA.
Tel: +1 480 659 0578
e-mail: trevor.pease@khl.com

SOUTH AMERICA OFFICE

KHL Group Americas LLC
Av. Manquehue Sur 520, of. 205,
Las Condes, Santiago, Chile
Tel: +56 9 7798 7493
e-mail: cristian.peters@khl.com

CHINA OFFICE

KHL Group China
Room 769, Poly Plaza, No. 14, South Dong Zhi
Men Street, Dong Cheng District,
Beijing 100027, P.R. China
Tel: +86 (0)10 6553 6676
e-mail: cathy.yao@khl.com

EDITORIAL

EDITOR:

Steve Ducker, UK Head Office
Tel: +44 (0)1892 786210
e-mail: steve.ducker@khl.com
Twitter: @KHL_DRI

SPECIALIST WRITERS:

Thomas Allen, Lindsey Anderson, Andy Brown,
Alex Dahm, Mike Hayes, Fausto Oliveira,
Cristián Peters, Murray Pollok, D. Ann Shiffler,
Euan Youdale

EDITORIAL DIRECTOR:

Paul Marsden

PUBLISHER:

James King

SALES

SALES MANAGER and UK, BENELUX:

Simon Kelly, UK Head Office
Tel: +44 (0)1892 786223
e-mail: simon.kelly@khl.com

CHINA: Cathy Yao

Tel: +86 10 6553 6676
e-mail: cathy.yao@khl.com

FRANCE: Hamilton Pearman

Tel: +33 1 45 93 08 58
e-mail: hpearman@wanadoo.fr

ITALY: Fabio Potestà

Tel: +39 010 570 4948
e-mail: info@mediapoints.nl.it

JAPAN: Michihiro Kawahara

Tel: +81 (0)3 3212 3671
e-mail: kawahara@rayden.jp

KOREA: CH Park

Tel: +82 2 730 1234
e-mail: mci@unitel.co.kr

NORDIC COUNTRIES: Bridget Leary

Tel: +44 (0)1892 786220
e-mail: bridget.leary@khl.com

SPAIN: Mike Posener

Tel: +353 86 043 1219
e-mail: mike.posener@khl.com

TURKEY: Emre Apa

Tel: +90 (0)532 324 36 16
e-mail: emre.apa@apayayincilik.com.tr

SWITZERLAND/GERMANY/AUSTRIA:

Simon Battersby

Tel: +49 711 34 16 74 0
e-mail: simon.battersby@khl.com

USA/CANADA:

Matt Burk

Tel: +1 312 496 3314
e-mail: matt.burk@khl.com

Wil Holloway

Tel: +1 312 929 2563
e-mail: wil.holloway@khl.com

Thomas Kavooras

Tel: +1 312 929 3478
e-mail: thomas.kavooras@khl.com

Tony Radke

Tel: +1 480 478 6302
e-mail: tony.radke@khl.com

Alister Williams

Tel: +1 312 860 6775
e-mail: alister.williams@khl.com

CLASSIFIED SALES: Eleanor Shefford

Tel: +44 (0)1892 786236
e-mail: eleanor.shefford@khl.com

VP GLOBAL SALES: Trevor Pease

e-mail: trevor.pease@khl.com

CONTENTS

NEWS

4 WORLD NEWS

C&D Consultants issues hospitals warning; successful 2019 convention for National Demolition Association; US bridge network outdated says report; high expectations of growth from McCloskey International dealers; demolition firm wins Considerate Constructors award; Hitachi and Abax sign telematics deal; Bill Moore to chair demolition summit

SPECIAL FEATURES

9 D&RI100

The global listing of demolition contractors by turnover for this year finds an industry building on the confidence and optimism it has gained during the past 12 months, with North American companies leading the charge towards total revenues worth almost US\$6.5 billion

23 COMPACT CRUSHING

Compact crushers are becoming smarter, with increases in efficiency forcing manufacturers to find new methods of success. Joe Malone reviews the latest products on the global market, including Keestrack, Kleemann, Metso, Sandvik, Terex Finlay and BAV Crushers

28 DUST CONTROL

With governments applying increasingly strict regulations during demolition operations, D&RI summarises developments in the key area of dust control, including all-in-one solutions and machines for cold climates from manufacturers in Europe, North America and Australia

31 PLANTWORX SHOW GUIDE

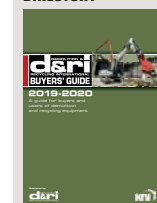
The Plantworx construction machinery exhibition takes place in June at its new venue in Peterborough, United Kingdom. We look at some of the record 450 exhibitors, which include Bobcat, Brokk, Caterpillar, Hyundai, Perkins, Red Rhino and Wacker Neuson

46 OPINION - RICHARD VANN

The managing director of the RVA Group compares demolition with how it looked when he was school-leaving age, then considers what advice he would give to youngsters starting out in the industry today and how he would sell a career in demolition to them for the longer term

DEMOLITION PORTFOLIO

DIRECTORY



SPECIAL REPORT



WEBSITE



eNEWSLETTER



TOPLIST

EVENTS



www.demolitionsummit.com

ON THE COVER

EvoEquip developed its Cobra 230 impact crusher to enhance profitability for small to medium sized enterprises. Read more in our Compact Crushing feature starting on page 23



REGULAR FEATURES

38 EQUIPMENT

Including what is claimed to be a world first in the wet processing industry from CDE Global

42 IN ACTION

How Inmalo intervened to fit a small shear on a mini excavator for contractor Kent Demolition

45 EDA NEWS

Change, the circular economy and the Construction 2020 forum

47 CLASSIFIED

MEMBER OF



Demolition & Recycling International (D&RI) makes every effort to report news accurately, but is not responsible for the validity of claims. All rights reserved. No part of this publication may be reproduced or transmitted in any form or by any means, electronic or mechanical, including photocopy, recording or information storage or retrieval system without written permission from the publisher.

Demolition & Recycling International: Second class postage paid at Champlain, New York and additional entries. Postmaster: Send address corrections to Demolition & Recycling International, c/o I.M.S., Box 1518, Champlain, NY 12919



© Copyright
KHL Group 2019
ISSN 1465-9778

Be aware in hospitals warns C&D

C&D Demolition Consultants is urging contractors working in or near hospitals to be aware of the dangers of mould.

C&D's John Woodward presented a paper on "hidden killers" in the industry to an Institute of Demolition Engineers meeting in Ireland last November.

The issue has now reached national prominence after Scottish Television (STV) News reported the country's health secretary Jeane Freeman's disclosure that infections contracted by six patients during surgery at Edinburgh Royal Infirmary were linked to mould.

Some of the instances proved fatal, though the exact number of deaths has not been released. Jeane Freeman added that none of the types of mould identified "were commonly found in hospitals".

NHS Lothian contacted close to 200 people warning them of a possible low-risk infection arising from the surgery.

"If your company is contracted to demolish structures within or near to a live hospital environment where there is a possibility of patients with low or compromised immune systems,



Mike Kehoe of C&D Demolition Consultants said airborne mould spores can kill

you have to consider the possibility of infection from mould," said John Woodward.

The company's senior demolition consultant Mike Kehoe, who has worked on more than 50 hospital-related projects, added: "Don't think you can just leave the mould on the walls when you demolish. The spores become airborne, can be pulled into wards through open windows and air conditioning systems, and can potentially kill innocent people recovering from surgery."

LiuGong acquires UK business

Chinese equipment manufacturer Guangxi LiuGong Machinery has announced that it is to acquire United Kingdom-based company Construction Plant & Machinery Sales, Southeast (CPMS).

LiuGong signed a share purchase agreement to acquire the business operations of CPMS and said that it will serve as the company's exclusive dealership for England, Wales and Scotland.

The move establishes

LiuGong's first international retail operation. While former CPMS shareholders will remain as directors of the business to ensure a seamless transition, the company said its European headquarters in Poland would assume responsibility for the direct sales operation in the UK.

"The UK is an important market for us," said Howard Dale, chairman of LiuGong Dressta.

"CPMS has laid a strong

foundation for LiuGong to make an impact not only in the traditional earthmoving market but also in demolition, recycling and plant rental sectors. We have an outstanding management team in place at CPMS whose members are true retail professionals and highly experienced in the UK construction equipment market."

Brian Prescott, CPMS managing director, added: "The new entity will be part of a much larger group and for our customers, this means greater

PEOPLE NEWS

■ Compact crushing and screening equipment company EvoQuip has appointed **Barry O'Hare** to the



position of international sales director. Barry has more than 11 years of experience and has held various positions within the Terex brand, including regional sales manager at Powerscreen.

The compact crushing and screening manufacturer said he would be responsible for leading the company's strategic and operational sales activities in all markets excluding North America. He will also develop and manage the company's territory sales.

Matt Dickson, EvoQuip global product line director said: "Barry brings huge knowledge and experience in international sales along with a great understanding of dealer development and support requirements."

financial stability, direct support from the manufacturer and a larger range of machines, as well as greater national coverage and support resources. In addition, this move will enhance resale values as the population of LiuGong machines grows."

Goodbye to Rockies and hello Texas with NDA

The USA's National Demolition Association says it looks forward to building on the success of its 2019 convention and expo at next year's event in Austin, Texas.

The latest gathering, styled "Demolition Rockies" and held in Aurora, Colorado, attracted almost 1,100 industry professionals and 90 exhibitors, while the outdoor Live Demolition event drew a crowd close to 700.

This year's event marked the close of Scott Knightly's two-year term as president. The EnviroVantage man handed over the reins to Chris Godek of Connecticut-based New England Yankee Construction, with Scott Homrich of Homrich Inc becoming the new vice-president.

Other highlights included the presentation of a Lifetime Achievement Award to Leonard Cherry of Houston demolition specialist Cherry Companies and the inauguration of the NDA Hall of Fame. There were also panel discussions on utility plant decommissioning and demolition projects from the owner's consultant perspective.

The Excellence in Demolition Awards went to Priestly Demolition, Stryker Demolition & Environmental Services and Ferma Corporation.

The 2020 convention and expo takes place from February 22 to 25. For details please visit www.demolitionassociation.com

Specialist enabling works provider Rhodar has completed the demolition of the former Asda Merchandising Centre of Excellence building in Leeds, United Kingdom (outlined in red in the picture).

Located on the iconic former Tetley Brewery site in the city centre, the steel portal frame of the building covered around 9,300 sq m (100,000 sq ft) and took 10 weeks to strip out and dismantle.

Razed to ground floor slab level, nearly 1,800 t of brick and mixed metal was removed and recycled. A further 220 t of general waste was also removed from the site, along with fixtures and fittings.

The demolition was part of the first stage of a plan to almost double the size of Leeds city centre. Managed by developer Vastint UK Services, the regeneration will include a new city park, homes, employment spaces and hotels.



US bridge network is 'outdated' says report

More than 47,000 bridges in the US are structurally deficient, according to a report from the American Road & Transportation Builders Association (ARTBA) which analysed federal data.

The report also showed that, although the number of structurally deficient bridges is down slightly compared to 2017, the pace of improvement has slowed to the lowest point since ARTBA began compiling its

reports five years ago. The average age of a structurally deficient bridge is 62 years, which compares to 40 years for non-deficient structures.

Approximately one in three Interstate highway bridges have identifiable repair needs, which equates to almost 19,000 bridges.

"At the current pace, it would take more than 80 years to replace or repair the nation's structurally deficient bridges.

"That's longer than the average life expectancy of a person living in the US," said Dr Alison Premo Black, ARTBA chief economist.

"America's bridge network is outdated, underfunded and in urgent need of modernisation. State and local government just haven't been given the necessary resources to get the job done."

The association estimates the cost to make the identified repairs as US\$170 billion. ■

Confidence 'high' at McCloskey

McCloskey International, whose product range covers crushers, screeners, stacker and washing systems, said it is optimistic for the next two years after feedback from dealers showed 85% of them having high expectations of growth.

Part of the reason is the new S250, exhibited at April's Bauma exhibition in Germany, which forms the company's entry into the large scale screening market. Its features include that it can be completely folded for transportation, and it has individual conveyor control for slowing down different sized

material at different times. Also on show, and proudly exhibited by company owner Paschal McCloskey himself, was the ST100 TF radial stacker, while the 154R impact crusher has been redesigned with a new chassis for improved access in case of material blockages.

International sales director Steve Walls said the company – which has a turnover of C\$400 million (US\$300 million) and a dealer base of 90 companies worldwide – was experiencing strong growth in Europe and Asia, alongside the continuing integration of recently acquired



Paschal McCloskey, owner of McCloskey International, at Bauma with the ST100 TF radial stacker

company Lippmann-Milwaukee into the group structure and investment in facilities in Northern Ireland.

This year's Bauma marked three years since the launch of McCloskey Washing Systems. ■

DEMOLITION BITS

■ A demolition project run by **Northern Gas Networks** has won a Considerate Constructors Scheme (CCS) National Site Award.

The company was honoured for its site in Carlisle, in the north west of England, where it demolished a gasholder.

The CCS National Site Awards recognise the highest-performing United Kingdom construction sites against the CCS's Code of Construction Practice.

The CCS looks at any area of construction activity that may have a direct or indirect impact on the image of the industry and monitors how considerate the site is being towards its local community, environment and workforce.

Out of over 6,700 eligible sites across the United Kingdom and Ireland, the CCS presented its Most Considerate Site Award – the organisation's top honour – to just six.

Considerate Constructors Scheme CEO Edward Hardy said: "Each award-winning site should be extremely proud of receiving this prestigious industry accolade, which recognises their invaluable contribution to improving the image of construction." ■

Hitachi and Abax sign telematic solutions deal

Technology company Abax has signed a deal to deliver telematic solutions to Hitachi Construction Machinery Europe (HCME).

In a statement Abax said that its software platform will be incorporated into several HCME machinery lines, including Zaxis-6 mini excavators.

The software allows the machines to communicate with Hitachi's remote monitoring system, Global e-Service.

This gives owners access to operational data on their machines, which is said to help increase productivity, enhance efficiency, maximise availability and reduce running costs.

Tom van Wijlandt, manager of business development at HCME, said, "Now the full range of Hitachi excavators is available with our unique remote monitoring system. If it has a Hitachi serial number, it can be found on Global e-Service."

Abax CEO Morten Strand said: "Our market-leading platform enables us to offer new opportunities and create mutual benefits for Hitachi, its dealers and customers. Hitachi is one of the market leaders in the construction equipment industry, and we are looking forward to a long-term partnership that will bring new developments and great opportunities."

The software is available for all current Hitachi mini and compact machinery and can also be retrofitted to previous generation models by the authorised Hitachi European dealer network.



DIARY DATES

2019

Plantworx

June 11 – 13
Peterborough,
United Kingdom
www.plantworx.co.uk

Demolition Expo

July 4 – 6
St Albans, UK
www.demolition-nfdc.com

Recycling Aktiv

September 5 – 7
Karlsruhe, Germany
www.recycling-aktiv.com

ConExpo Latin America

October 2 – 5
Santiago, Chile
www.conexpolatinamerica.com

World Demolition Summit

October 23 – 24
Boston, USA
www.demolitionsummit.com

2020

World of Concrete

February 4 – 7
Las Vegas, USA
www.worldofconcrete.com

National Demolition Association Convention & Expo

February 22 – 25
Austin, USA
www.demolitionassociation.com

German Demolition Conference

February 28
Berlin, Germany
www.fachtagung-abbruch.de

Mr Moore fits the bill for WDS

Demolition & Recycling International is delighted to announce that Bill Moore will be a conference session chair at this year's World Demolition Summit (WDS) in Boston, USA.

Bill will share chairing duties with Jim Graham of Winter Environmental as the event returns to North America for the first time in three years on October 23 and 24.

A well known and respected industry figure, Bill has spent the past six years as principal consultant and expert witness with global consultancy ERM.

He has vast experience in demolition including 28 years with one of the world's leading contractors, Brandenburg Industrial Service Company, where he held the roles of safety

Bill Moore (left) with Civils award winner Mainline Demolition's Peter and Robert Moltoni at the 2018 summit in Dublin

director, corporate risk manager, director of corporate relations and ultimately vice-president – marketing.

Bill's contribution to the industry has been recognised by the USA's National Demolition Association (NDA), where he served as president between 2003 and 2005.

The NDA presented Bill with a Lifetime Achievement award in 2013, a year before he received similar recognition at the WDS in Amsterdam.

Bill's links to the WDS go back to the very start of the event and as well as chairing the conference in its early years he is a valued



member of the World Demolition Awards judging panel.

The World Demolition Summit is organised by Demolition & Recycling International, in co-operation with the US National Demolition Association and with the support of the European Demolition Association. The headline sponsor is Volvo Construction Equipment.

For more details, please visit www.demolitionsummit.com

Enterprising Norm aims 'to conquer Australia'

Norm Engineering is the new importer of Rototilt's tiltrotators and peripheral systems in Australia.

The use of tiltrotators on excavators is common in the Nordic countries, but in Australia interest has only begun to grow in recent years.

Now, however, more and more contractors are said to be discovering the benefits of 360° rotation and 40° tilting of tools.

"We are based in two completely different parts of the world, yet we still share a passion for excavator equipment," said Hans Röring, export development manager at Rototilt Group.

"It is clear that Norm Engineering is really keen to conquer Australia with the tiltrotator concept."

Norm Engineering both manufactures and sells earthmoving attachments for skid steers, tracked loaders, excavators, telehandlers and backhoes for the Australian market.

"The construction industry in Australia will be impressed by the increased versatility and efficiency a tiltrotator delivers. We can see huge potential in this collaboration with Rototilt," said John Pesch, general manager of Norm Engineering.

2019 World Demolition Awards deadline looms

If you are a demolition contractor or an equipment supplier looking to enter the 2019 World Demolition Awards, the clock is ticking.

The deadline for entries is June 30 – which means there is just a few weeks to go if you want to be considered for shortlisting.

The World Demolition Awards are part of the World Demolition Summit, organised by Demolition & Recycling International in co-operation with the National Demolition Association with the support of the European Demolition Association, and takes place in Boston, USA on October 23 and 24.

And with 11 categories honouring best practice and innovation across our industry to enter for, the awards have something for everyone in demolition and recycling.

You don't even have to win an award to get a positive outcome from entering – if it is good enough to be shortlisted by our international panel of judges who have more than 300 years of industry experience between them, you will receive a Shortlisted logo to use in your marketing and publicity.

But you can't win, or be shortlisted, without entering, so why not visit <http://demolitionsummit.com/awards.html> or get in touch with steve.ducker@khl.com to find out more?

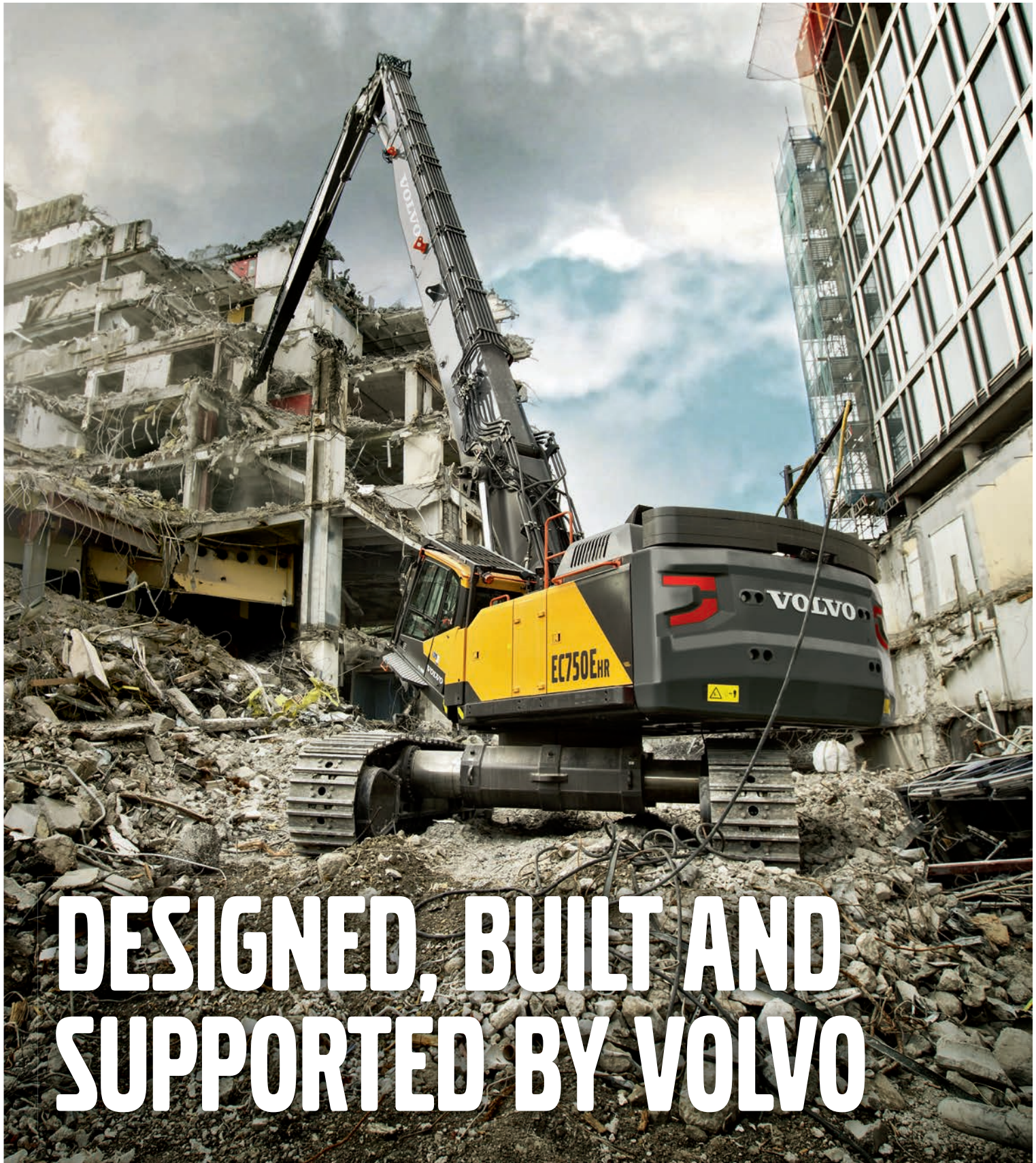


Hans Röring, export development manager of Rototilt (on right) with John Pesch and Adam Christensen of the company's Australian importer Norm Engineering

MEET BROKK 70 THE NEW MINI SUPER HERO



Packed with demolition power, faster than ever and extremely compact. The BROKK 70 is the perfect solution for safe and efficient demolition in very confined spaces.



DESIGNED, BUILT AND SUPPORTED BY VOLVO

FOR MORE INFO



<http://open.to/a/tuN9m>

Top performances don't get much higher: a 36 metre pin height from a remarkably stable platform that allows you to safely get both high and inside the structure. Weighing in at just above 100 tonnes, the EC750E HR is the flagship of the Volvo demolition fleet. Its versatility, power and best-in-class operator comfort make it a highly productive piece of kit that will contribute heavily to your bottom line. We're confident you'll be impressed – because the machine was developed working closely with customers who are experts in the demolition sector. Talk to your dealership to arrange a viewing.

We are the headline sponsor for
WORLD CONFERENCE AND AWARDS
DEMOLITION
SUMMIT 2019
BOSTON, USA 23-24 OCTOBER 2019

Volvo Construction Equipment
Building Tomorrow



This year's listing of global contractors by turnover finds an industry building on the confidence it has gained during the past 12 months.

America leads the contractor charge

A decade on from arguably the worst financial crisis in a lifetime, demolition looks to be converting some of the optimism attributed to it in the past 12 months into real money. That

is the verdict from this year's **dsri100**, the annual snapshot of the leading contractors by turnover. With a combined turnover of more than US\$6.4 billion (all figures quoted in this article are in US\$), the companies

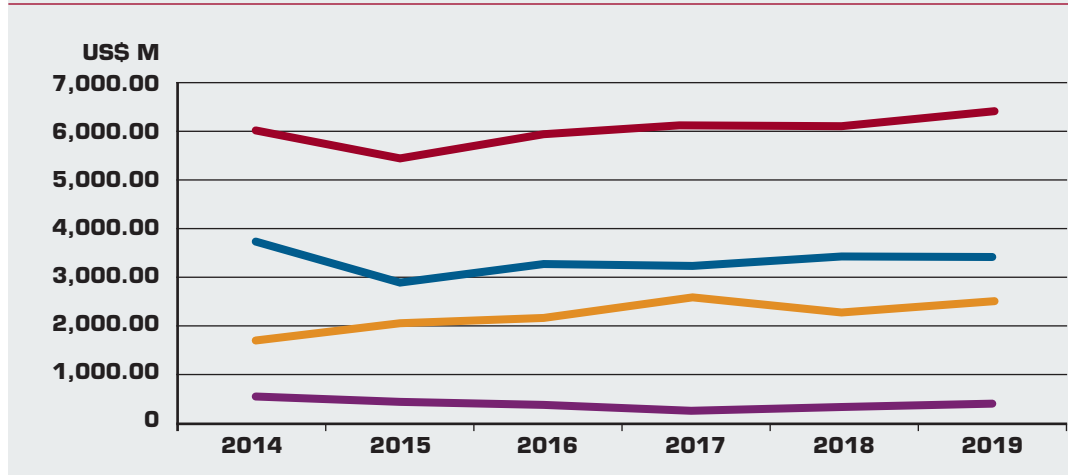
making up this year's list recorded their highest figure at any time in that decade, a whole \$1 billion higher than the level of four years ago and almost \$300 million greater than 12 months previously. The only

way, it would seem, is up.

Probing further, it was the North America who made the difference. With many of the companies involved declaring their figures at a time that coincided with the mid-point of President Trump's term of office, demolition as well as construction looks to be seeing the benefits. With a slight decline in Europe being cancelled out by a small increase in the rest of the world, the performance of US and Canadian contractors mirrored the boom in the market overall.

dsri 100 YEAR ON YEAR

	2014	2015	2016	2017	2018	2019
dsri100	6,033.00	5,459.27	5,875.64	6,150.76	6,120.63	6,410.23
Europe	3,772.00	2,906.32	3,319.45	3,264.38	3,422.41	3,398.59
North America	1,732.40	2,138.68	2,186.86	2,563.44	2,322.40	2,622.44
Rest of World	528.6	414.27	369.33	322.94	375.82	389.20



POSITIONS 1 TO 10

Nine of the top 10 companies from 2018 retook their places ahead of the pack, five – including perennial leader North Star – retained their previous positions, four others moved one place either way. Germany's Freimuth bucked the trend, climbing to 8th place on the back of a 10% increase in turnover. The other major talking point was Brandenburg Industrial Service Company entering the top three after boosting

>10

dsri 100 THE WORLD'S LARGEST DEMOLITION CONTRACTORS

POSITION	COMPANY NAME	LOCATION	COUNTRY	TURNOVER (US\$ M) 2017	TURNOVER (US\$ M) 2018
1	North Star	New York	UNITED STATES	461.98	492.64
2	Keltbray	Esher	UNITED KINGDOM	395.00	420.00
3	Brandenburg Industrial Service Co	Chicago	UNITED STATES	208.00	222.00
4	Erith Contractors	Erith	UNITED KINGDOM	226.25	207.05
5	DH Griffin Wrecking Co	Greensboro	UNITED STATES	171.00	170.93
6	Beelen Sloopwerken	Harderwijk	NETHERLANDS	152.98	167.35
7	Penhall	Anaheim	UNITED STATES	EST 170.00	EST 150.00
8	Freimuth Abbruch und Recycling	Bülkau	GERMANY	EST 134.40	148.59
9	McGee Group	Wembley	UNITED KINGDOM	140.60	143.72
10	AF Gruppen	Oslo	NORWAY	138.14	136.11

POSITION		COMPANY NAME	LOCATION	COUNTRY	TURNOVER (US\$ M) 2017	TURNOVER (US\$ M) 2018
19	(18)					
11	8	Wanty SA	Binche	BELGIUM	144.26	135.72
12	16	Delete Group	Helsinki	FINLAND	93.24	126.59
13	13	Hagedorn Unternehmensgruppe	Gütersloh	GERMANY	117.60	125.19
14	12	Cardem	Bischheim	FRANCE	119.49	123.33
15	28	Delsan AIM	Montréal	CANADA	59.22	101.05
16	15	Manafort Brothers	Plainville	UNITED STATES	106.19	100.00
17	NEW	Select Demo Services	Salem	UNITED STATES		94.00
18	19	Bierlein Companies	Midland	UNITED STATES	86.70	92.45
19	14	Max Wild	Berkheim	GERMANY	116.40	92.43
20	42=	Ferma Corporation	Mountain View	UNITED STATES	42.00	91.00
21	20	Liberty Industrial	Glebe	AUSTRALIA	73.87	86.19
22	23	Brown and Mason	Dartford	UNITED KINGDOM	69.56	85.15
23	18	Envirocon	Boston	UNITED STATES	90.55	80.00
24	17	McMahon Services	Dry Creek	AUSTRALIA	91.30	73.94
25	25	Scudder Demolition	London	UNITED KINGDOM	66.50	65.79
26	22	MCM Management Corporation	Bloomfield Hills	UNITED STATES	71.72	61.00
27	24	ETS Genier Deforge	Magny Les Hameaux	FRANCE	68.18	60.72
28	31	Raz-Max	St Petersburg	RUSSIA	54.70	60.60
29	27	Priestly Demolition	King, Ontario	CANADA	60.98	60.56
30	35	Ferraro Group	Neunkirchen	GERMANY	47.88	54.99
31	47	Cantillon	Watford	UNITED KINGDOM	40.73	52.98
32=	NEW	Veit	Rogers	UNITED STATES		52.90
32=	26	Nabekai Corporation	Tokyo	JAPAN	62.16	52.00
34	32	Deconstruct UK	London	UNITED KINGDOM	50.52	51.89
35	62	Adamo Group	Detroit	UNITED STATES	31.23	50.60
36	96	777 Group	Croydon	UNITED KINGDOM	19.82	EST 50.00
37	21	DSM Demolition	Birmingham	UNITED KINGDOM	72.96	49.19
38	30	Despe	Torre de Roveri	ITALY	EST 54.76	49.14
39	67	Independence Excavating	Independence	UNITED STATES	29.00	EST 47.00
40	NEW	Remedial Construction Services	Houston	UNITED STATES		46.50
41	39	PP O'Connor	Manchester	UNITED KINGDOM	46.18	44.40
42	40	North American Dismantling Corp	Lapeer	UNITED STATES	45.00	44.20
43	42=	Total Wrecking & Environmental	Tonawanda	UNITED STATES	42.00	44.00
44	34	Squibb Group	Stanford le Hope	UNITED KINGDOM	49.45	42.19

turnover by almost 7%. Projects included the demolition and environmental remediation of a coal-fired generating station on the Delaware River, while the company's work on the \$32 million Bannister Federal Complex was shortlisted in the Industrial Demolition category of the 2018 World Demolition Awards.

Elsewhere, Beelen Sloopwerken of the Netherlands recorded the single biggest surge in revenue, at more than 9%, which took

its turnover to more than \$160 million and was enough for the company to climb a place to sixth. Building on a 15% increase in turnover from 2016 to 2017, Beelen invested in fleet including a Liebherr tower crane and a Husqvarna demolition robot.

POSITIONS 11 TO 20

For the second consecutive year, this section of the list provided the highest new entrant, in this case the USA's Select Demo Services.

During 2018 the company performed one of the largest, most labour-intensive demolition, abatement and clean-up projects in the history of Massachusetts state with its

involvement in the Columbia gas explosion clean-up. The disaster killed one person, injured 25 others, damaged and destroyed dozens of homes and businesses and displaced thousands of

>13

“ Select Demo Services performed one of the largest demolition abatement and clean-up projects in the history of Massachusetts ”





One of the worlds largest decommissioning, dismantling and demolition contractors

Brown and Mason Ltd was formed in 1959, when the managing director's grandfather started out with just £400. Now, 60 years later, the company has established itself as one of the largest demolition contractors in Europe and world leaders in the field of controlled explosive demolition.

During the course of the companies history the types of projects have been varied from City demolition, Industrial Dismantling, asbestos removal and to date the total demolition of 55 power stations.

For all your demolition requirements and free budgetary advice call BAM



As well as the 55 power stations we have completed some landmark projects that include: Demolition of the first multi-storey building on the Paternoster Square development close to St Pauls Cathedral in London, and the asbestos removal and demolition of the former department of Environment's offices in Marsham Street, London.



Our Services Include:

- Controlled Explosive Demolition
- Industrial Dismantling and Decommissioning
- Decontamination, Chemical, Pharmaceutical, Hydrocarbons
- Demolition, all types of projects undertaken.
- Asbestos removal
- Nuclear Decommissioning, dismantling and demolition.
- Marine Decommissioning and Dismantling
- Excavation and Remediation
- Asset Recovery, maximising value in scrap metal.
- Engineering Services, including design, fabrication and erection service for façade retention
- Preconstruction advice, free confidential budgetary advice on costing and programming



www.brownandmason.com

Tel: 01322 277731 Email: B&M@brownandmason.co.uk



QI442 IMPACTOR THE NEXT GENERATION



Sandvik QI442 mobile impact crusher is a pioneering solution offering primary and secondary crushing in one unit. This upgraded 2-Series model features the newly developed CI621 Prisec technology which comes with a host of innovations for improved efficiency and greater safety during maintenance. It offers you the flexibility to work in open or closed circuit, with the optional double deck hanging screen enabling rapid set-up in less than 30 minutes. Fitted with My Fleet remote monitoring system as standard, the QI442 offers one of the most flexible and efficient mobile crushing solutions for large scale operators worldwide.

POSITION		COMPANY NAME	LOCATION	COUNTRY	TURNOVER (US\$ M) 2017	TURNOVER (US\$ M) 2018
19	(18)					
45	44	Hughes and Salvidge	Portsmouth	UNITED KINGDOM	41.44	42.16
46	64	Occamat	Noyant	FRANCE	30.99	42.12
47	45	R Collard	Hook	UNITED KINGDOM	41.43	42.08
48	54	Avenir Deconstruction	Artigues	FRANCE	37.23	41.85
49	NEW	Fabio Bruno Construcoes	Rio de Janeiro	BRAZIL		41.01
50	NEW	Precision Demolition	Lewisville	UNITED STATES		41.00
51	51	Thompsons of Prudhoe	Prudhoe	UNITED KINGDOM	38.86	40.38
52=	48	ARC Abatement	Waco	UNITED STATES	40.43	40.00
52=	NEW	Demex	Chicoutimi	CANADA		40.00
52=	36	Murray Demolition	Etobicoke	CANADA	47.43	^{EST} 40.00
55	38	Nasdi	Woburn	UNITED STATES	46.34	39.00
56	60	Moß Abbruch Erdbau Recycling	Lingen	GERMANY	32.52	38.96
57	50	G Tscherning	Hedehusene	DENMARK	38.94	38.61
58	55	F&R Industriedemontage und Abbruch	Neukirchen	GERMANY	35.79	37.84



McGee Group cemented another year in the top 10 with contracts including major works for The Londoner hotel at the United Kingdom capital's Leicester Square

people from their homes. The project for Select Demo originally consisted of the removal of gas appliances, but the company says the general contractor and client were so impressed with production that they increased scope to include asbestos abatement of more than 7,500 houses.

The company that enjoyed the

distinction of highest new entrant a year ago, the Delete Group of Finland, built on that success with a rise of four places to 12th and a move in dollar turnover terms from eight to nine figures, while other European contractors Cardem (France) and Hagedorn Unternehmensgruppe (Germany) posted more modest increases.

Away from Select Demo, the main mover and shaker was Canada's Delsan-AIM, which broke into the top 20 after a range of high-profile hospital, generating station and refinery projects as well as the major civil construction initiative at the Turcot Interchange in Quebec.

The company also invested more than \$5 million in fleet during 2018.

POSITIONS 21 TO 50

To find an example of the unforgiven nature of the **dsri 100**, look no further than Liberty Industrial of Australia.

Despite a year-on-year turnover increase of more than \$12 million, or more than one- >14

“ Delsan AIM broke into the top 20 after a range of high-profile projects and also invested more than \$5 million in fleet during 2018 ”

TOP 20 COMPANIES IN NORTH AMERICA

POSITION		COMPANY NAME	COUNTRY	TURNOVER (US\$ M) 2018
19	(18)			
1	1	North Star	UNITED STATES	492.64
2	2	Brandenburg Industrial Service Co	UNITED STATES	222.00
3	3	DH Griffin Wrecking Co	UNITED STATES	170.93
4	4	Penhall	UNITED STATES	^{EST} 150.00
5	10	Delsan AIM	CANADA	101.05
6	5	Manafort Brothers	UNITED STATES	100.00
7	NEW	Select Demo Services	UNITED STATES	94.00
8	7	Bierlein Companies	UNITED STATES	92.45
9	15=	Ferma Corporation	UNITED STATES	91.00
10	6	Envirocon	UNITED STATES	80.00
11	8	MCM Management Corporation	UNITED STATES	61.00
12	9	Priestly Demolition	CANADA	60.56
13	NEW	Veit	UNITED STATES	52.90
14	19	Adamo Group	UNITED STATES	50.60
15	NEW	Independence Excavating	UNITED STATES	^{EST} 47.00
16	NEW	Remedial Construction Services	UNITED STATES	46.50
17	14	North American Dismantling Corp	UNITED STATES	44.20
18	15=	Total Wrecking & Environmental	UNITED STATES	44.00
19	NEW	Precision Demolition	UNITED STATES	41.00
20	17	ARC Abatement	UNITED STATES	40.00
				2081.83

POSITION		COMPANY NAME	LOCATION	COUNTRY	TURNOVER (US\$ M) 2017	TURNOVER (US\$ M) 2018
19	(18)					
59	41	Takayama Kogyo	Tokyo	JAPAN	44.77	37.00
60	29	John F Hunt	Grays	UNITED KINGDOM	57.72	36.47
61	52	Marutone Apex	Tokyo	JAPAN	38.55	35.00
62	59	MGL Demolition	Durham	UNITED KINGDOM	32.41	34.75
63	53	Matsuda City Development	Fukuoka	JAPAN	37.53	34.00
64	57	Prangenberg & Zaum	Dusseldorf	GERMANY	32.72	33.93
65	58	Central Environmental Inc	Anchorage	UNITED STATES	32.60	32.80
66	46	DDM	De Meern	NETHERLANDS	41.20	32.63
67	56	AWR Abbruch	Urmitz	GERMANY	35.52	31.59
68	71	Sungdo Construction	Seoul	SOUTH KOREA	27.64	30.06
69	65	Syd Bishop	Orpington	UNITED KINGDOM	30.34	30.03
70	85	AR Demolition	Nuneaton	UNITED KINGDOM	23.68	EST 30.00

The redevelopment of Vancouver, Canada helped Pacific Blasting & Demolition break into the top 100

sixth of its 2017 figure – enough to get a place in the top 10 biggest annual revenue rises in percentage terms – the company dropped out of the top 20. Projects included the Munmorah and Dampier power stations and the Macquarie coal preparation plant, while the company backed up investment in fleet with new computer and global positioning system technologies.

Joining Liberty just outside the top 20, and reporting a hefty turnover increase of its own,



was the United Kingdom-based contractor Brown & Mason, whose progress was based on a large portfolio of industrial demolition projects, often

including expertise in explosives for which the company has a specialist division. Though headquartered in the south east of England, projects such as

the Longannet power station in Scotland showed a true national presence that contributed towards an eventual turnover increase of more than 20%.

The lower end of the top half became the new home of Occamat (46th), who outstripped both Liberty and Brown & Mason for percentage growth during the year. Two places lower found another French company, Avenir Deconstruction, whose 12% improvement provided more encouraging news for a once-depressed national market.

Completing the top 50 was Brazil's Fabio Bruno Construções, returning to the **d&ri100** after an absence during which it suffered more than most during the country's economic difficulties but has now recovered sufficiently to open a new operation in the USA.

POSITIONS 51 TO 75

The halfway point of this year's list, in revenue terms, was \$41 million. This was \$1.5 million up on 2018 and the trend continued in 51st place, where the same company as last year – Thompsons of Prudhoe –

>17

TOP 20 COMPANIES IN EUROPE

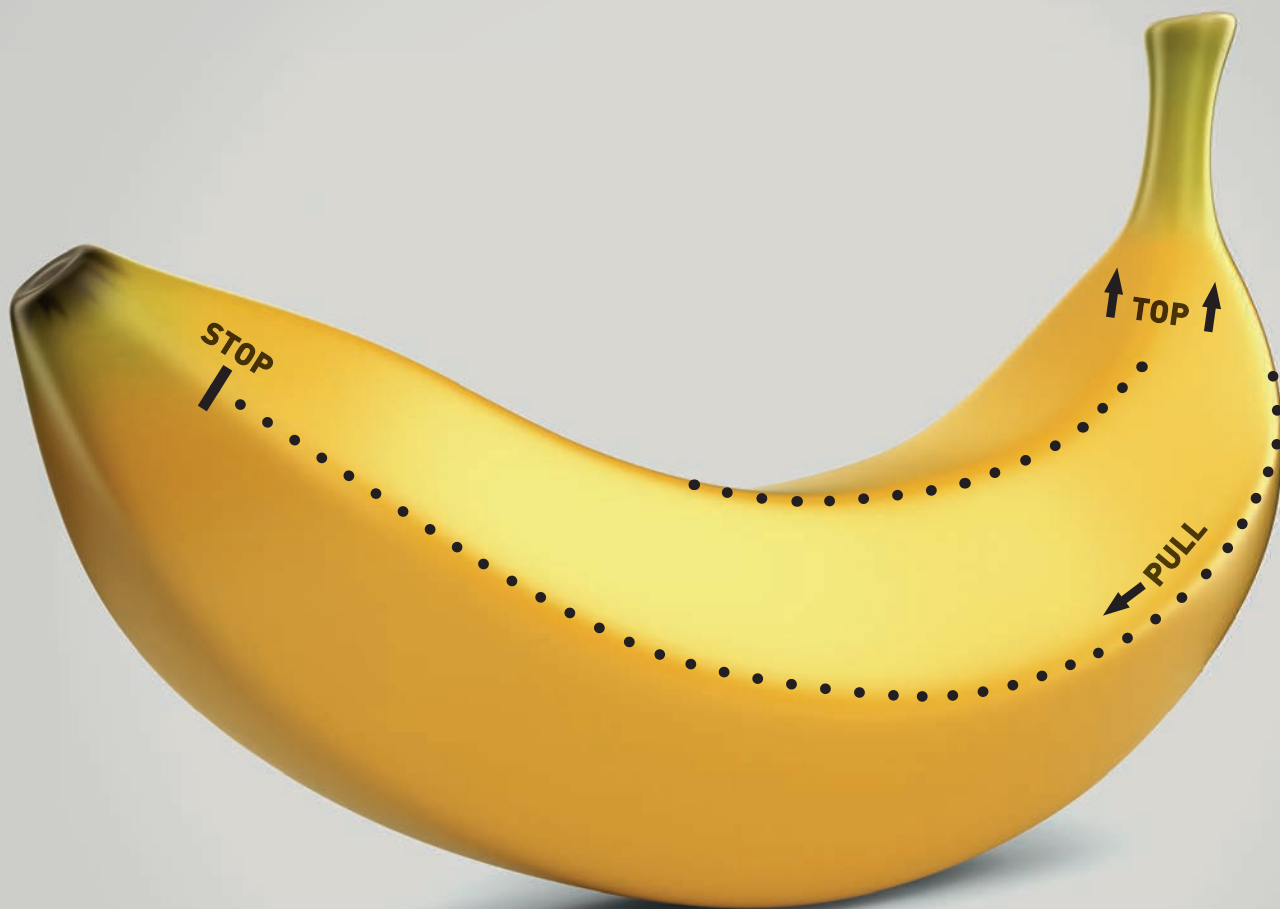
POSITION		COMPANY NAME	COUNTRY	TURNOVER (US\$ M) 2018
19	(18)			
1	1	Keltbray	UNITED KINGDOM	EST 420.00
2	2	Erith Contractors	UNITED KINGDOM	207.05
3	3	Beelen Sloopwerken	NETHERLANDS	167.35
4	7	Freimuth Abbruch und Recycling	GERMANY	148.59
5	5	McGee Group	UNITED KINGDOM	143.72
6	6	AF Gruppen	NORWAY	136.11
7	4	Wanty SA	BELGIUM	135.72
8	11	Delete Group	FINLAND	126.59
9	9	Hagedorn Unternehmensgruppe	GERMANY	125.19
10	8	Cardem	FRANCE	123.33
11	10	Max Wild	GERMANY	92.43
12	13	Brown and Mason	UNITED KINGDOM	85.15
13	15	Scudder Demolition	UNITED KINGDOM	65.79
14	14	ETS Genier Deforge	FRANCE	60.72
15	18	Raz-Max	RUSSIA	60.60
16	NEW	Ferraro Group	GERMANY	54.99
17	NEW	Cantillon	UNITED KINGDOM	52.98
18	19	Deconstruct UK	UNITED KINGDOM	51.89
19	NEW	777 Group	UNITED KINGDOM	EST 50.00
20	12	DSM Demolition	UNITED KINGDOM	49.19
				2357.39



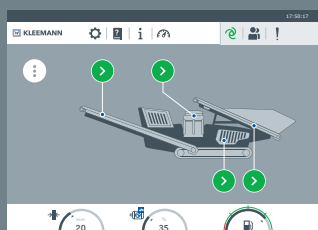
Brazilian contractor Fabio Bruno Construções returned to the **d&ri100** listing this year

INSTRUCTIONS?

SPECTIVE - THE NEW, INNOVATIVE OPERATING CONCEPT.



 **SPECTIVE**



SPECTIVE. Some things are so simple, they don't need explaining. Until recently, mobile crushers haven't been one of those things. But now, there's SPECTIVE: the new, innovative operating concept from KLEEMANN. Clear operating instructions and pictograms actively support the user in finding just the right setting to take on any task - quickly, precisely and very simply via touch screen. Complex functions, operated intuitively - with SPECTIVE! Time to get started!



 www.kleemann.info/spective



Setting the standards in demolition since 1924, we are a leading demolition and deconstruction contractor.

Our range of specialist services includes top down demolition, structural demolition, land remediation, façade retention, temporary works, enabling works, soft strip and asbestos removal. Delivered as either a principal contractor, trade/package contractor or subcontractor, providing high-quality, bespoke solutions to the challenges faced by our clients.

Tel: 020 8900 0221 | www.careysplc.co.uk/scudder-demolition

  @careygroupplc

POSITION	COMPANY NAME	LOCATION	COUNTRY	TURNOVER (US\$ M) 2017	TURNOVER (US\$ M) 2018
19 ⁽¹⁸⁾					
71 ⁸⁰ 🏆	Boverhoff	Heerde	NETHERLANDS	24.90	29.51
72 ⁶¹ 🏆	JH Laarakkers	Sambeek	NETHERLANDS	31.69	29.25
73 ⁶³ 🏆	O'Rourke Wrecking Company	Cincinnati	UNITED STATES	31.00	29.00
74= ⁸⁴ 🏆	Concrete Cutting and Breaking	Grand Rapids	UNITED STATES	24.05	28.00
74= NEW	Interior Specialists Inc	White Marsh	UNITED STATES		28.00
76 ⁷⁰ 🏆	Central Demolition	Bonnybridge	UNITED KINGDOM	28.12	27.46
77 ⁶⁹ 🏆	Vlasman Betonbewerkings	Alphen aan den Rijn	NETHERLANDS	28.13	27.17
78 ⁷⁷ 🏆	Cawarden Group	Derby	UNITED KINGDOM	25.46	26.46
79 NEW	Pacific Blasting & Demolition	Burnaby	CANADA		26.00
80 ⁹³ 🏆	Wooldridge Ecotec	Bagshot	UNITED KINGDOM	20.72	25.74
81 NEW	John Stacey & Sons	Tadley	UNITED KINGDOM		25.63
82= ⁸¹ 🏆	American Wrecking	South El Monte	UNITED STATES	24.78	25.00



A seaside demolition job for EnviroVantage of the USA

“ If Europe can match some of the revenue increases across the Atlantic, the next 12 months could be even more positive ”

posted a similar increase. The third quartile featured several solidly performing European contractors. Moß Abbruch, F&R Industriedemontage, MGL Demolition and Boverhoff,

whose projects included three separate hospital demolitions and a railway depot.

Also populating this part of the **dsri 100** were companies from Canada, Japan and South Korea. The \$28 million earned by 75th place Interior Specialists Inc was more than \$2 million higher than Sauer Bau's total to achieve the equivalent position a year ago.

TOP 10 PERCENTAGE REVENUE INCREASE

POSITION	COMPANY NAME	COUNTRY	PERCENTAGE INCREASE
1	Delsan AIM	CANADA	70.63
2	Adamo Group	UNITED STATES	62.02
3	Occamat	FRANCE	35.91
4	Delete Group	FINLAND	35.77
5	Cantillon	UNITED KINGDOM	30.08
6	Wooldridge Ecotec	UNITED KINGDOM	24.23
7	Brown and Mason	UNITED KINGDOM	22.41
8	Moß Abbruch Erdbau Recycling	GERMANY	19.80
9	Boverhoff	NETHERLANDS	18.51
10	Liberty Industrial	AUSTRALIA	16.68

POSITIONS 76 TO 100

Notable among the new names was that of Ambigroup, which occupied 88th place. Its native Portugal has never been considered a hotbed of demolition, but the company was noticed enough to become involved alongside Maxam in the Elcogas integrated

>18

TOP 10 INCREASE IN TURNOVER US\$M

POSITION	COMPANY NAME	COUNTRY	TURNOVER INCREASE (US\$ M)
1	Delsan AIM	CANADA	41.83
2	Delete Group	FINLAND	33.35
3	North Star	UNITED STATES	30.66
4	Adamo Group	UNITED STATES	19.37
5	Brown and Mason	UNITED KINGDOM	15.59
6	Beelen Sloopwerken	NETHERLANDS	14.37
7	Brandenburg Industrial Service Co	UNITED STATES	14.00
8	Liberty Industrial	AUSTRALIA	12.32
9	Cantillon	UNITED KINGDOM	12.25
10	Occamat	FRANCE	11.13

Excludes new entries and estimated totals

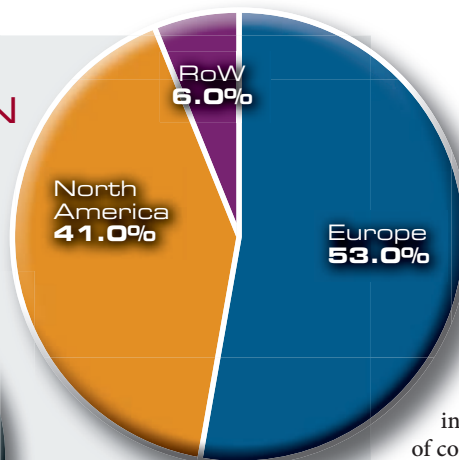
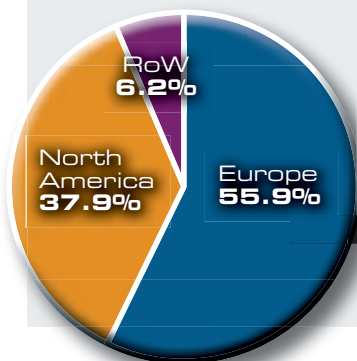


USA-based contractor O'Rourke numbered public and private clients among its projects during the past 12 months

POSITION	COMPANY NAME	LOCATION	COUNTRY	TURNOVER (US\$ M) 2017	TURNOVER (US\$ M) 2018
82= 66	Homrich Wrecking	Carleton	UNITED STATES	29.69	25.00
82= 73	Kroeker Inc	Fresno	UNITED STATES	26.26	25.00
82= 79	Sabre Demolition	Warners	UNITED STATES	25.04	25.00
86 NEW	B&B Wrecking	Cleveland	UNITED STATES		24.80
87 75	Sauer Bau und Projektentwicklung	Starnberg	GERMANY	25.80	24.57
88 NEW	Ambigroup	Arranho	PORTUGAL		24.42
89 74	American Demolition Corporation	Elgin	UNITED STATES	25.81	24.00
90 91	Plannerer	Pullenreuth	GERMANY	21.48	23.90
91 82	KDC Contractors	Manchester	UNITED KINGDOM	24.58	23.75
92 78	Dickens Quality Demolition	Phoenix	UNITED STATES	25.16	23.00
93= 33	Cherry Companies	Houston	UNITED STATES	EST 50.00	22.00
93= 85=	National Wrecking Company	Chicago	UNITED STATES	23.68	22.00
95 49	Coleman & Company	Birmingham	UNITED KINGDOM	39.47	21.61
96 NEW	Dem-Master	Bathgate	UNITED KINGDOM	16.33	21.54
97 NEW	TH Ruckbau	Bonningstedt	GERMANY		21.06
98= 88	Pece of Mind	Orlando	UNITED STATES	22.20	21.00
98= 95	EnviroVantage	Epping	UNITED STATES	EST 20.00	EST 21.00
100 92	Berg Corporation	Baltimore	UNITED STATES	21.00	20.01

REGIONAL BREAKDOWN

2018
Total Revenue
US\$M 6,410.23



2017
Total Revenue
US\$M 6,120.63

United Kingdom-based Cawarden bought a new £1.5 million (US\$2 million) high reach during 2018

combined cycle power plant dismantling project (featured in the March 2019 issue of Demolition & Recycling International) in neighbouring Spain as well as domestic projects. The presence of so many new entrants inevitably reduces the number of companies in this section with large turnover increases, but Wooldridge Ecotec of the United Kingdom and Germany's Plannerer both managed double-digit rises to emphasise that the industry's improvement during



2018 went all the way down the **dsri 100**.

Not surprisingly, the make up of this year's listing, and the activity within it, means the regional breakdown looks a bit different from a year ago.

Specifically, the difference works in favour of North America, which now makes up 41% of the total compared to under 38% in 2018.

Europe, by contrast, saw its market share fall from close to 56% to a more modest 53%.

This was repeated in the major companies from each area.

In terms of the top 20 companies on each continent, those in North America were responsible for combined sales of \$2.08 billion, or an almost 10% increase on the total last year.

But the finest of Europe, its top 20, despite achieving \$2.36 billion between them, posted

NEW ENTRIES

POSITION	COMPANY NAME	COUNTRY	TURNOVER (US\$ M) 2018
17	Select Demo Services	UNITED STATES	94.00
32=	Veit	UNITED STATES	52.90
40	Remedial Construction Services	UNITED STATES	46.50
49	Fabio Bruno Construcoes	BRAZIL	41.01
50	Precision Demolition	UNITED STATES	41.00
52=	Demex	CANADA	40.00
74=	Interior Specialists Inc	UNITED STATES	28.00
79	Pacific Blasting & Demolition	CANADA	26.00
81	John Stacey & Sons	UNITED KINGDOM	25.63
86	B&B Wrecking	UNITED STATES	24.80
88	Ambigroup	PORTUGAL	24.42
96	Dem-Master	UNITED KINGDOM	21.54
97	TH Ruckbau	GERMANY	21.06



The Erith Group have over a half century of complex enabling works experience, now occupying the position of the World's 3rd largest demolition contractor.

Erith are proud to have recently won the RoSPA Gold Award as well as being recognised with the CN Specialists Awards for Training Excellence and World Demolition Awards for; Urban Demolition over US\$10M and Safety Training – as well as receiving a highly commended for Civil Demolition.

Demolition | Asbestos Removal | Infrastructure | Haulage and Logistics | Design Engineering | Training



For more information, call us on: **0370 950 8800**, email: **bd@erith.com**, or visit: **www.erith.com**

Extra information

Many of the companies featured in the **dsri 100** have supplied videos and/or photographs of projects they have been involved in. To see these, please visit www.khl.com

Currency conversion

Exchange rates used to convert domestic currencies to US dollars are from a rolling five-year average between 2014 and 2018.

Sourcing the data

D&Ri invites and welcomes all demolition contractors worldwide to supply turnover data for the **dsri 100** and the majority of the figures quoted are sourced by this method. Others are made up of reasonable estimates derived from company or financial websites or other online coverage of the demolition industry.

If you are not included

To receive an entry form for the **dsri 100** 2020, please contact steve.ducker@khl.com

SELECTED COMPANIES OUTSIDE TOP 100

COMPANY NAME	LOCATION	COUNTRY	TURNOVER (US\$ M) 2018
Antal Abbruch und Baumanagement	Frankfurt am Main	GERMANY	14.04
Armac Group	Solihull	UNITED KINGDOM	16.02
Bordeaux Demolition Service	Merignac	FRANCE	19.89
Break Thru Enterprises	Lombard	UNITED STATES	18.00
Cleveland Wrecking	Orange	UNITED STATES	16.00
Demoliciones Mitre	Buenos Aires	ARGENTINA	8.90
Eurco	Vinkovci	CROATIA	9.95
General Smontaggi	San Pietro Mosezzo	ITALY	16.38
Grant Mackay	Woods Cross	UNITED STATES	19.00
Guy Doyere	Pontchartrain	FRANCE	17.55
Helfaut Travaux	Helfaut	FRANCE	14.00
Lloyd D Nabors	Hutchins	UNITED STATES	15.00
Martens Demolition Company	Genk	BELGIUM	11.00
Nikau Contractors	Auckland	NEW ZEALAND	20.00
Prodemo	Epinay Sur Seine	FRANCE	10.00
Rachel Contracting	St Michael	UNITED STATES	17.00
R Baker & Son	Marlboro	UNITED STATES	20.00
Robinette Demolition	Villa Park	UNITED STATES	18.00
Silverado Contractors	Oakland	UNITED STATES	18.00
Uchimura Kogyo	Tokyo	JAPAN	14.00

only a 1.5% increase, despite having seven of the top 10 global percentage increases.

All told, the threshold for a place in the top 100 now sits at \$20 million, compared to \$18 million a year ago. As the list of selected companies outside the main table shows, there are a host of contractors waiting to come into the fold.

With the overall value of \$6.4 billion constituting – in round

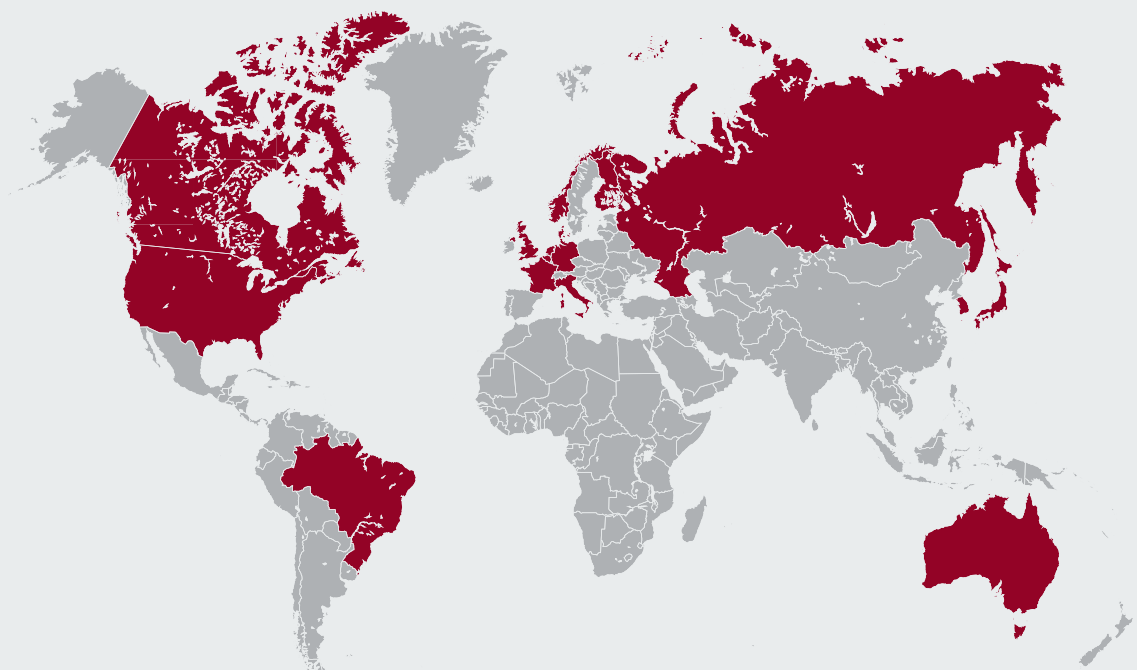
figures – a 5% increase on the previous year, a repeat during the next 12 months would see the 2020 listing having breached the \$6.5 billion barrier and the \$7 billion mark under threat. If Europe can match some of the revenue increases generated on the other side of the Atlantic, the picture going into the third decade of the 21st century could be even more positive.

It's a long way from 2008. ■



Germany's Hagedorn goes indoors at a job site in Dusseldorf

THE GLOBAL SPREAD



Australia	2
Belgium	1
Brazil	1
Canada	5
Denmark	1
Finland	1
France	4
Germany	11
Italy	1
Japan	4
Netherlands	5
Norway	1
Russia	1
South Korea	1
UK	26
USA	35

JSC

ARES PRIME ULTIMATE HEAVY BREAKER

JSC Co., Ltd based in South Korea supplies hydraulic breakers mounted on excavators.

We are currently looking for suitable partners who act as our dealer/distributor for the regions of Germany, Italy, France, UK, Spain, USA and Canada etc.

JSC Co., Ltd

Made in Korea

Discover our products at www.koreahammer.com
For more information, please contact at
jesse@koreahammer.com / hpchun@koreahammer.com
pyc7232@koreahammer.com



JSC

The Best or Nothing

75-14, Daemul-ro, Daeseo-myeon, Eumseong-gun,
Chungcheongbuk-do, South Korea (27674)
Tel: + 82 43 881 5417 Fax: + 82 43 882 5418
E-Mail: jesse@koreahammer.com / pyc7232@koreahammer.com



Thank you to all our bauma visitors for visiting us during the bauma exhibition from April 08th - 14th, 2019.



THANK YOU FOR
VISITING DEMAREC
AT BAUMA 2019

NEW PRODUCTS 2019!

DRUM CUTTERS



CARRIER WEIGHT
2 - 60 T

WHEEL CUTTERS



CARRIER WEIGHT
14 - 60 T

HAMMERS



CARRIER WEIGHT
0.5 - 200 T

CRUSHER
BUCKETS



CARRIER WEIGHT
10 - 50 T

SCREENER
BUCKETS



CARRIER WEIGHT
8 - 60 T

In the end... It's only about the right tool

DEMAREC. De Hork 32, 5431 NS Cuijk, the Netherlands. Tel.: +31 (0) 485 442300, info@demarec.com

DEMAREC Deutschland. Im Rohnweiher 14, D-53797 Lohmar, Germany. Tel.: +49 2205 92027 0, info@demarec-deutschland.de

KINSHOFER UK. 4 Milton Industrial Court, Hors eld Way, Bredbury, Stockport, Cheshire, SK6 2TA. Tel.: +44 (0)161 406 7046, sales@kinshofer.co.uk

KINSHOFER USA. 6420 Inducon Drive - Suite G, Sanborn, NY, 14132. Tel. +1 (716) 731 4333, sales-usa@kinshofer.com

KINSHOFER Canada. Mainway Drive, Unit #11 - Burlington, ON L7L 7G5. Tel. +1 (905) 335 2856, sales-northamerica@kinshofer.com



"RHINO STRENGTH, RHINO POWER"



VISIT US AT
PLANTWORX
11th-13th JUNE 2019
YOUR CONSTRUCTION SHOW
STAND DB11

Red Rhino Crushers
Issac Newton Way, Grantham, NG31 9RT
www.redrhinocrushers.com

Tel: 01476 590790

Red Rhino Crushers where quality, reliability and performance comes as standard. 6 Size options available. Visit our website for more information

A WATER
TWISTER



FOG CANNON A-JET 655



FOG CANNON A-JET 355

Gemmo Group s.r.l.

Via della Tecnica, 34 36025 NOVENTA VICENTINA (VI) - ITALY
Tel. 0039.04.44.88.71.41 e-mail: info@gemmogroup.it web: fogcannons.gemmogroup.it

Compact crushers are becoming smarter, with efficiency increases forcing manufacturers to find new methods of success.

Joe Malone reviews the latest products on the global market.



The next stage

A new year brings with it fresh optimism and innovation – not to mention a whole host of trade shows – giving manufacturers the opportunity to impress once more.

That was the case for Germany-based company Kleemann, which has launched two new mobile impact crushers that are said to be high performers for demolition concrete and asphalt pavement recycling, and natural stone processing.

Step forward the Mobirex MR 110 Zi EVO2 and MR 130 Zi EVO2, which were showcased for the first time at World of

Concrete this year. The key to these new models, at least in name, is the ‘EVO2’ part. The Mobirex EVO2 series is used in the primary and secondary crushing stages and boasts a new Spective control system.

The models have been designed to be easily transported and are ready for rapid deployment. They have a diesel-direct drive concept which ensures high performance with economical consumption at the same time, according to the company.

The innovative Continuous Feed System (CFS) is said to control the frequency of the conveyor belts in relation to the crusher load.

(Above) Kleemann’s Mobirex MR 110 Zi EVO2 is used in the primary and secondary crushing stages

The plant is controlled via a 300 mm (12 in) touch panel incorporating the Spective control concept.

Spective simplifies the operation of the plant ensuring all functions are recognisable. This way, operating errors are avoided and occupational safety is improved.

Important functions, such as the crusher gap adjustment, are easily adapted, some even during operation of the plant.

CLASSIFYING SCREEN

Another smart feature of the crushers is the integrated, independently vibrating double-deck prescreen, which reliably filters fines and keeps them out of the crusher, cutting wear while saving fuel. The plant can also be equipped with an extra-large secondary screening unit to produce high volumes of a defined final particle size without the addition of a classifying screen.

A company the size of Kee-track has lots of experience in launching new products, and this year has seen it present a new model in the compact crushing sector. Bauma was the launchpad, and the B7e was debuted internationally as a new 700 t/hr model, replacing the smaller B6.

The plant’s core is the tried and tested single-jaw, CJ 412 jaw crusher with a 1,200 x 830 mm (47 x 32 in) inlet for feeding sizes up to 700 mm (27 in) and a wide, hydraulically adjustable CSS range of 75 to 250 mm (3 to 9 in). In the B7e – only available as a plug-in hybrid – the crusher is driven by a 132 kW electric motor.

Another 55 kW electric motor powers the hydraulic system for the tracks, the lifting

Double-digit efficiency increase

Efficiency is a key factor in why companies choose to purchase certain machines. For French company Durance Granulats, which produces aggregates to be used in road and highway surfacing, it turned to Metso to find increased efficiency.

The company operates a working quarry in Peyrolles, southern France, and it believes it has improved its crushing energy efficiency by around 12% since it purchased Metso’s MX4 cone crusher model. The company’s aggregate production in Peyrolles has four crushing stages, and with its 30 staff members, it handles 1.2 million t annually.

The main reason for its selection, according to the company, was the maximum feed size.

Mathieu Kasprzak, director of operations at Durance Granulats, said: “The MX4 has met our expectations and delivered instantaneous flow rate as well as improved crushing energy efficiency by about 12%.

“We have also been piloting the MX3 on quaternary stage since April 2018 and we are fully satisfied with its performance and we plan to continue with it.”

The Metso MX4 has proved a valuable investment for Durance Granulats





BAV Crushers is set to launch a new model midway through the year, replacing its BAV-CB3 model

A decade of success

For BAV Crushers, the past 10 years have proved fruitful. The company launched its first excavator-mounted crusher bucket almost a decade ago, as the firm began with jaw-type pulveriser attachments beforehand, having diversified into small, tracked and micro mini crushers.

However, the high cost of tracked mobile machines, combined with the economic turmoil that followed the financial crisis, rendered such machines effectively uneconomical.

Undeterred, BAV Crushers began to investigate the viability of using technology it had developed for these mobile crushers, on a range of buckets suitable for use on compact excavators.

That range now spans machines from 2.5 to 16 t operating weight and has found applications throughout Europe and the USA, in industries as diverse as landscape management, building and general construction, through to waste and recycling operations.

A replacement for the first model the firm developed, the BAV-CB3 model, which suits mini excavators from 3.5 to 6 t operating weight, is due midway through this year, and is set to offer faster cycle times, for higher output, combined with an even more compact design for greater machine stability.



The MR 130 Zi EVO2 by Kleemann claims a diesel-direct drive concept to ensure high performance with economical consumption at the same time

cylinders, the vibrating feeder with two-deck pre-screening and all conveyors.

The entire diesel-electric power is delivered by a Volvo diesel 285 kW engine and a 330 kVA generator.

According to Kee-track, energy-saving costs of up to 80% can be achieved in emission-free plug-in operation from mains or external gensets. The plant weighs just under 69 t and is highly mobile.

The company also showcased its recently-launched model, the fully-hybrid impact crusher R3e with single-deck post-screen and oversize recirculation. This model is said to be particularly interesting to companies looking for lighter-weight models.

SECOND GENERATION

Terex Finlay has launched its second-generation J-1160 jaw crusher, said to have had the customer and operator at the forefront of its functionality.

In comparison to its predecessor, the plant has a number of improvements such as increased under jaw clearance and all-round preventative maintenance and serviceability access.

The heartbeat of the machine, says Terex, is the aggressive 1,000 x 600 mm (39 x 23 in) jaw crusher with a proven pedigree in recycling, demolition and aggregate production applications. The hydrostatic drive gives the operator the flexibility of variable crushing speed and the ability to run the chamber in reverse in recycling applications.

According to Terex, the machine is

designed for maximum fuel efficiency delivering one of the lowest costs per tonne in the market. It also features its updated and larger heavy-duty variable speed vibrating grizzly feeder with integrated prescreen. This increased screening area and aggressive action is said to provide a more efficient method of

>26



A Sandvik QJ341 on site for SJ Walchester

SJ Walchester adds Sandvik crusher

Specialist recycling and demolition company SJ Walchester (SJW) has invested in a new Sandvik crusher.

SJW, based in Staffordshire, United Kingdom, procured the QJ341 tracker jaw crusher to improve its asphalt and tarmac recycling.

The company, which recycles waste from demolition works, said that because materials such as asphalt and tarmac become sticky at higher temperatures, they are harder for recycling machines to crush during the summer months.

SJW managing director Steve Walchester said: "If the crusher was to break down it would cost us hundreds if not thousands of pounds in downtime, wages and revenue. That is not to mention the damage to our reputation."

The company, which produces 2,000 to 3,000 t of MOT Type 1 and 6F2 aggregates every day, said it chose to add the crusher to its operations because it crushes equally as well in reverse as it does forward and because it has a greater output.

Kee-track's B7e model replaces the B6 and was launched at Bauma this year





A TEREX BRAND

ENGINEERED TO MAKE AN IMPACT! COBRA 290, IMPACT CRUSHER



The Cobra 290 Impact Crusher is a machine that provides class leading productivity, unmatched versatility and excellent fuel efficiency. The quick set up times, simple intuitive operation and ease of transport makes this machine an ideal solution for all applications.

2

**INDEPENDENT
HYDRAULIC
APRONS**



**OPTIONAL
UNDER
PAN**



**AVAILABLE AS
CLOSED CIRCUIT
WITH AFTERSCREEN**

For more information please visit: terex.com/evoquip/cobra290
or **Tel:** +4428 8771 8500 **Email:** evoquip@terex.com



terex.com/EvoQuip



The compact size of the EvoQuip Cobra 230 were a major factor in the purchasing decision for ME Coad

EvoQuip takes Cobra on the road

With over 20 years of experience, ME Coad specialises in all areas of contract crushing and screening and provides a cost-effective materials recycling service across the south west of England.

Owner Mark Coad first established himself as an agricultural contractor in 1997 but has expanded into plant hire and recycling. In 2010 he saw an opportunity to start recycling the construction and demolition waste he was extracting from the plant hire jobs using Powerscreen screening and crushing equipment. Due to an increase in demand in 2012, the company expanded its recycling operations and today the site operates as an Inert recycled aggregates processing centre.

As a result, Mark required a new machine that would improve health and safety and working conditions on site. It also had to be compact enough for Mark and his team to be able to take it to sites located down narrow country roads.

The Cobra 230, supplied by dealer Blue Machinery Group, is the new impact crusher from the EvoQuip range and has been designed to enhance the profitability of small to medium-sized operators like ME Coad.

EvoQuip says it provides class-leading productivity, unmatched versatility and excellent fuel efficiency, and its 9.32 m (30 ft) length and 2.99 m (under 10 ft) height meant that it was the ideal machine for Mark and his operation.

Mark Coad commented: "I chose the Cobra 230 because of its compact size and it has already proved its worth, because I have completed two jobs already, where I have had to go down a narrow farm track and do a 90° turn and with my previous crusher I would have never got it onto site. It's also great how I can fit it onto a low loader trailer combined with an 8 t swing shovel, meaning I can take all the equipment needed for the job on one load."



The R3e crusher by Keestrack is said to be of particular interest to companies looking for lighter-weight models

separating and removing fines before entering the crushing chamber.

The variable speed VGF (vibrating grizzly feeder) ensures continuous choke feeding of the crushing chamber, and material from the prescreen can be diverted to a stockpile via the on-board by-pass conveyor or join the crushed product on the main belt.

It features a large, 5 cu m (176 cu ft) hopper with fixed sides as standard and is also available with hopper extensions fitted with hydraulic self-locking to provide efficient and faster machine set up and tear down times.

A key new design feature of the machine, according to the company, is the 900 mm (35 in) wide main conveyor which can be raised and lowered allowing the operator to perform maintenance functions from ground level and for ease of removal in clearing blockages.

The machine is fitted with the Terex Finlay T-Link telematics system as standard.

SMALLER OPERATIONS

Revelling in its most compact machine in the series, Finnish company Sandvik has launched the QJ241 mobile jaw crusher said to be ideal for smaller operations. Like the rest of the range, the model promises maximum productivity with low operating costs, and has been designed with the user in mind.

The model uses a substantial 1,000 x 650 mm (39 x 25 in) jaw, powered by a 168 kW engine. This means that while the machine is compact, it retains a high level of power and productivity. The jaw itself is adjustable, allowing the operator to ensure output is always at its optimum level.

This mobile jaw crusher is also said to be the ideal solution for recycling sites, yet is equally productive for a number of other applications. The crusher also provides a greater discharge height and increased clearance for rebar discharge, due to the raise and lower facility on the main conveyor.

The hydraulically adjustable jaw setting can be tailored to customer applications and the reversible crushing action can relieve blockages and deal with problematic materials. The equipment also features hydraulically folding doors on the reinforced hopper for quick set up times, maintaining optimum productivity at all times.

Maintenance has also been improved thanks to new design features such as steel pipework, enabling a safe and maintenance-free sealing solution with the added benefit of better heat dissipation. With easy access to the engine compartment and an in-built automatic central lubrication system, downtime is reduced.



The Terex Finlay J-1175 has recently been joined by the J-1160 second generation jaw crusher



**GET THE
RED
CRUSH!**



**Incredible cutting powers
combined with easily
replaceable wear parts**

- Lowest fuel consumption and operational cost of pulverising
- Unique cylinder positioning, guarantees maximum force during total cycle
- Built of high performance structural steel
- Always in good condition with easily replaceable wear-parts

D&Ri summarises developments in the key area of dust control, including 'all-in-one' solutions and machines for cold climates from manufacturers in Europe, North America and Australia.

Supply and demand

Dehaco has launched the Tera 60 GTM, which is described as an all-in-one solution for dust control. According to the company, it is not dependent on water or electricity supply, as the unit is equipped with a built-in generator and water tank. Moreover, the dust control unit features the possibility of being connected with a water supply in the field.

The Tera 60 GTM, which extends the existing Tera series, has been developed and designed using the in-house expertise of the Dehaco production team in co-operation with customers who are already active users of the Tera products.

Dehaco says that its introduction has broadened the range of possible applications, making it highly effective when preventing asbestos being released from burning buildings, preventing dust from spreading at recycling centres and controlling odour nuisance at waste treatment sites.

In addition, the unit is designed for

preventing dust emissions during demolition, renovation and recycling operations.

Governments are applying stricter regulations during demolition operations, so the use of dust control units is increasingly common. With these measures, governmental bodies aim to prevent residents and operating staff from contracting health issues.

OUTGOING WATER FLOW

The company believes that what distinguishes the Tera 60 GTM from its competition is the technology used to disperse the outgoing water flow. The rotating fan has been specially designed for the Tera series and fits perfectly with the cone, while the rotating spray head is designed with openings that distribute the water evenly when operating. The openings are designed so that lime and dust particles do not clog up. The unit also features the application of adjusting droplet sizes with a single push on a button.

The galvanised aluminum frame of the

Tera 60 GTM is built for carrying a heavy load and features an integrated water tank placed on the underside of the unit and equipped with baffle plates. This makes sure the Tera is well balanced when on the move, as a result the towing vehicle experiences enhanced road holding. The top cover of the machine can be disassembled, making it always accessible.

EmiControls' V22Orca is hybrid a dust suppression machine designed specifically for countries with colder climates. If, due to the cold temperatures, it is no longer possible to suppress dust using water mist, the V22Orca immediately makes snow.

The company says its new machine guarantees effective dust suppression all year round, and ultimately, this hybrid solution may be defined as the "machine for extreme conditions", as it suppresses dust up to a temperature of 50°C with water mist, while in winter it can operate down to -25°C with snow.

According to EmiControls, snow is particularly suited to suppression, as the dust particles bind with the snowflakes. As well as this feature, the V22Orca is equipped with an air compressor to generate snow, and depending on the atmospheric temperature and the humidity in the air, the machine automatically transitions from summer to winter mode.

After the huge success of the restyled V22 – EmiControls' biggest dust controller – the silent V12s unit was the next in line to receive a new design.

The biggest difference is the size. The new V12s is much smaller, making it easier to transport and integrate into existing systems, yet the company says it retains the stability and robustness to operate in challenging conditions. The machine can be started and

The V22Orca from EmiControls, seen here in its summer guise, can also produce snow for dust control in winter settings



Dehaco's Tera 60 GTM can be used without the need for an electricity or water supply

“ Governments are applying stricter regulations in demolition operations ”

rotated much faster, and angles can be quickly adjusted and there are three different water consumption speeds available.

The water pressure is now higher too, which makes it possible to create an even finer water mist to abate the dust more efficiently.

VALVE TECHNOLOGY

At the same time, all functions known from the previous model are still the same: the specially developed turbine is particularly quiet with a noise emission of 60 dB(A) within a radius of 20 m (66 ft). The turbine works with two speed levels, so it has the possible flexibility to spray fine water mist from 30 to over 55 m (98 to 180 ft). Thanks to a sophisticated valve technology, the amount of water can be controlled by remote control on three levels. Water flow is from 16 to 100 l/min

Due to its low noise level the V12s is described as ideal for work in city centres or areas where noise levels need to be kept low. It is suitable for a range of industries including demolition and recycling.

Australian company Grydale has announced the appointment of AJ Gammond as its United Kingdom dealer for its dust collectors.

The Bosstek DB-60 Fusion, a Stateside solution updated for 2019



Frutiger's next generation

Stepless adjustment of the throwing distance for dust control cannons is no problem for Swiss company Frutiger.

At this year's Bauma exhibition, the company presented the latest development from MobyDick: the New Generation models. In addition, the proven MobyDick wheel washing systems as well as solutions for the automatic cleaning of heavily soiled construction machines were found at the booth.

This year's attraction was undoubtedly the New Generation models of the cannon range for dust control. The new systems were developed in collaboration with the Zurich University of Applied Sciences (ZHAW) and, thanks to the latest technology, are also supported by the Innovation Promotion Agency of the Swiss Confederation. The innovative models have a range of functions – in the 3060 and 3090 models, the throw distance, power consumption, noise emissions and amount of water used can always be adapted precisely to the operating conditions. The high-performance cone developed with the ZHAW ensures the best efficiency. The water can be sprayed either through the nozzle ring (large area) or the nozzle head (concentrated). The droplet throw can thus be adapted to the respective operating conditions.

The still young product area of cleaning heavily soiled construction machines, or demucking, met with great interest from numerous operators of large fleets.

At its 16th Bauma, Frutiger enjoyed one of the most successful trade fairs and next year it will be at Conexpo in Las Vegas and Ifat and Steinexpo in Germany.



Frutiger combines demucking with dust control

It described the dealership as a key part of its expansion into the European market.

AJ Gammond is a family run business established for over 40 years and managing director Bruce Gammond said: "We have been following Grydale with great interest over the last year and are looking forward to being able to offer an effective solution for dust control to the UK market."

The link up included AJ Gammond sending a highly experienced team to Australia for training on the JMS M Series dust to work with Grydale's engineering and manufacturing team during in-depth training and develop a close working relationship.

Grydale products include the JMS 50 LS hybrid dedusting system featuring a 250 kW centrifugal exhaust fan mounted on a single mobile base. The hybrid machine with Volvo Penta Tier 4/5 Final diesel engine is a large volume dedusting system that can be used

for general ventilation as well as providing effective dust extraction at source.

During 2018 the company developed the JMS 60 M Series mobile dust collector and the first Euro JMS 20 Series tracked dust collector for large infrastructure projects.

Last August the company moved its manufacturing operations to a larger factory in Queensland, significantly increasing capacity.

SELF-POWERED

Earlier this year, USA-based dust and odour control technology specialist BossTek updated its family of self-powered dust suppression equipment with Tier IV Final-compliant generators, which it says ensures compliance in all 50 states.

BossTek made the announcement with the debut of the new DustBoss DB-60 Fusion, a suppression system driven by a high-reliability 25 hp electric motor and paired with a genset powered by a heavy-duty four-cycle indirect injection diesel engine.

Designed, engineered and assembled in the USA, the generator features a dual-containment fuel cell, heavy gauge lockable enclosure and oversized brushless alternator for easy starting.

The new generator series is designed with sound attenuation for excellent noise reduction and a multi-voltage switch with utility power outlet in all voltage modes. The digital engine/generator controller is equipped with single button stop/start and a 300 litre fuel capacity, giving the units a run time of more than 24 hours at a prime rating of 45 kVa.

Like previous Fusion systems, the warranty covers three years or 3,000 hours. ■



Time for a change.

Jaw changeout in less than 2 minutes.
The new RAZER X.



www.genesis-europe.com

New home for expanding event

The Plantworx construction machinery exhibition takes place in June in its new venue at Peterborough, United Kingdom. **D&Ri** looks at some of the record 450 exhibitors.

The Plantworx Construction Machinery Exhibition hosted by the United Kingdom's CEA (Construction Equipment Association) is almost upon us. The fourth biennial working construction event is taking place at its new home at the East of England Arena in Peterborough from June 11 to 13. Along with its complementary event, the Railworx rail-related civil engineering show, it will benefit from 20% more exhibition space than two years ago and spans more than 140,000 sq m (1.5 million sq ft).

The event is set for a record 450 exhibitors – one-third of whom are exhibiting at Planworx for the first time.

“After Bauma, Plantworx will be the first opportunity to see new products from many of the major OEMs,” said CEA chief executive Rob Oliver.

“With the advent of Stage V engine requirements – and more entrants into the electric-powered arena – Plantworx 2019 promises to be the best yet to see new machines.”

Here are some of the companies who will be taking part.

AVANT TECNO

Avant says its e6 is the first electric compact loader on the market with a lithium-ion battery. Avant has developed the state-of-the-art battery and battery management together



The Avant e6 electric compact loader



Bobcat's fully electric, zero emission E10e mini excavator

with Valmet Automotive. The company believes that lithium-ion battery technology provides significantly better performance compared to lead-acid batteries. In light use, a lithium battery performance is around 30% better than lead-acid batteries, while in heavy use operating time is up to three times longer.

BOBCAT

Bobcat has launched a fully electric, zero-emission mini-excavator in the 1 t class, the new E10e. With a transportation width of just 72 cm (28 in), the compact, zero tail swing machine passes easily through standard doors and lifts, making it ideal for indoor demolition work. This is combined with no emissions and low noise.

BPH ATTACHMENTS

Featuring a patented replaceable screening net system, the Prodem PSB-R range is

Event details

WHAT'S THE EVENT?

Plantworx 2019

WHERE IS IT?

Peterborough, United Kingdom

WHEN IS IT?

June 11 to 13

WEBSITE

www.plantworx.co.uk

the ultimate in flexibility, durability and productivity for screening material on demolition, construction, recycling and landfill sites. The PSB-R Rotary Screening Bucket is said to be ideal for material selection, aggregate recovery, waste separation, filling containment cages, covering pipelines and more. It is also available in a wheeled loader version and is suitable for use on excavators weighing from 2.5 to 75 t.

BROKK UK

The company is returning to Plantworx with its biggest ever line up of remote-controlled demolition machines, which are now all fitted with its Smartpower electrical system. Brokk's range of Darda hand held splitters, and the group's latest acquisition hydrodemolition company Aquajet, with the new Ergo system. Ecovolve electric dumpers will also be on show.

Brokk comes to Plantworx with its biggest ever range of remote-controlled demolition machines



>32

BRENDON POWERWASHERS

On show will be the Dustec DT400 water-powered dust and odour suppression solution, which works as an attachment to the company's range of powerwashers. It operates by using the water to drive a fan, which generates the air flow needed to help launch fine water droplets into the atmosphere. The water is then returned to the powerwasher to be recycled or pumped to waste, ensuring a controlled amount of water is delivered for suppression.

CATERPILLAR

Finning will be showcasing the new range of Next-Generation Caterpillar mini-excavators at Plantworx, giving customers the chance to experience the huge range of features that make operating easier and more efficient. The 11 new models in the Cat mini hydraulic excavator line up start at 1.5 t and stretches up to Caterpillar's first ever 10 t excavator.

DIGBITS

The Digbits Grading Beam is a versatile excavator attachment to enable a fast but precise level finish, especially across a large surface area. The company says the grading beam is fast becoming the more preferred option over a standard grading bucket, and in comparison levelling can be carried out in one wider pass, saving valuable time.

GKD TECHNOLOGIES

GKD has developed a new, simplified safety system designed to support its range of motion safety indicators. The company has adapted its algorithms to provide a height and slew system combined into one slim lightweight display. The award-winning Sensor Height & Slew is a fully adaptable system which can be configured to control only one function; height or slew or both. There are further options to stop the machine on reaching limits as well as a travel inhibit feature.

GOLDHOFER

Goldhofer has developed a new semitrailer, the Arcus PK, with a new steering system. This product is the first low loader semitrailer with friction-steered pendular axles. This is said to result in the advantage of better steering performance and time savings by not needing any adjustments to the steering system before starting the transport.

HIDROMEK

Hidromek showing the new HMK 145 LC SR excavator, and says it is designed to

The new HMK 145 LC SR excavator from Hidromek



The Caterpillar Next Generation range of minis will be showcased by Finning



The HX220A L crawler excavator takes centre stage for Hyundai



work with power and precision in tight spaces, reducing the risk of damage and improving safety in all fields and conditions. The Opera Control System is used to facilitate the easy use of the machine.

HYUNDAI CONSTRUCTION EQUIPMENT

The company is coming to Plantworx with a range of machines including examples from the new A range of machines. Taking centre stage will be the HX220A L (Stage V) crawler excavator, which includes Auto Safety Lock and Eco Guidance and MG/MC. Hyundai will also have a demonstration area where machines will be in action.

JCB

JCB has launched three new 13-16 t X Series excavators built for ground working specialists and these models will be at Plantworx this year. The 131X, 140X and 150X models boast the JCB X Series hallmarks of robust durable design, increased productivity and improved operator comfort and ease of use. Key features include a wider operator cab

for all-day comfort, in cab noise reductions of up to 68%, modern styling with durable strike points to reduce total ownership cost and increased diameter high-flow pipework to boost efficiency. The company says the two larger models also deliver a 6% improvement in tonnes per litre productivity.

KUBOTA

Kubota is showing the new KC70-4e electric mini dumper, which is described as capable of the same high performance of those that run on diesel or petrol but allows users to work where gas emissions or noise levels are restricted. The KC70-4e is equipped with a state-of-the-art lithium battery (48V/200Ah) and has a payload capacity of 700 kg (1,653 lb). With a width of 750 mm (29 in) the company says the product can enter buildings with ease.

MECALAC

In 2018, Mecalac began what it calls a game-changing research and development project to redefine the compaction roller market. The result is the TV1200, a new concept driven exclusively with a joystick on the right-hand side console. In removing the roller's steering column, Mecalac says it has revolutionised the access and driving style of this type of vehicle.

MESSERSI

Messersi is showing its new TC120-e full electric remote control tracked dumper. This model is a special version of the well appreciated TC100-d. Features include a tracked fully electric undercarriage, a wide footprint, high stability and excellent driving comfort in all conditions. Electric transmission is powered by two inverters, two electric motors and two planetary gears.

MILLER

At Plantworx, Miller will be exclusively launching what it claims to be its safest, most innovative, intelligent quick coupler; the GT Series. The GT Quick coupler features an Intelligent Coupler Connect System as well as a novel ISO compliant locking system, devised to ensure that the widest set of OEM pin pickups are safely attached even if there is a loss of hydraulic power.

DEHACO. THE BEST EQUIPMENT FOR A NEW BEGINNING...



DUST CONTROL UNITS - TERA 60 GTM



ATTACHMENTS



FLOOR STRIPPERS



SANITATION EQUIPMENT



Visit us at

MATEXPO 19

KORTRIJK XPO BELGIUM 11-15 september 2019

C10

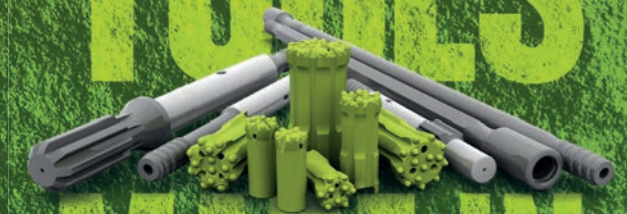
Kruisbaak 25
2165 AJ Lisserbroek
The Netherlands
+31 (0)88 - 20 20 600
info@dehaco.nl
www.dehaco.nl



P&V

Padley & Venables

QUALITY TOOLS



MADE IN BRITAIN



PROVEN WORLDWIDE



ROCK DRILLING

DEMOLITION

CONTRACTORS'

WWW.PADLEY-VENABLES.COM



SALES@PADLEY-VENABLES.COM

TEL: +44 (0) 1246 299 100



Red Rhino is introducing the new 5000 Plus and Screener Plus models

MOLSON COMPACT EQUIPMENT

Molson will be showing machines from its new range of Kobelco compact excavators. From 0.8 to 9 t these machines have a reputation for operational smoothness, low noise levels, reliable construction and low fuel consumption. Visitors to the stand will be able to see four models on the demonstration plot and try their hand out on a range of operator challenges. One of these models for demolition will be the SK75SR-7, which was launched at Bauma in April.

PERKINS

Perkins is showing its new 1204J-E44TA engine at Plantworx 2019. The four-cylinder, 4.4-litre engine meets EU Stage V and is available in multiple power ratings from 82 to 150 kW with peak torque reaching 825 Nm. Perkins says the engine is ideal for equipment manufacturers who are looking to downsize, as it offers significant machine productivity benefits with a 15% increase in power, 10% more torque and a 5 to 10% reduction in fuel consumption.

PMX

PMX was conceived as part of James Fisher Prolec's strategy to improve worksite efficiency and safety and is a pioneering development in construction plant equipment safety and telemetry technology. This innovation combines two widely accepted technologies – excavator hazard mitigation and global geo-positioning systems – to mitigate risk on a sitewide level, while reducing operator workload. According to the company, the resulting system delivers transformative benefits in terms of site safety, operational efficiency and cost reduction, providing peace of mind to asset owners and their construction partners.

PRINOTH

Prinoth is introducing its line-up of tracked dumpers to the UK market, the Panther Series. The vehicle showing at Plantworx is the Panther T14R rotating dumper. Prinoth says it offers the highest speed combined to the highest payload of any vehicle in its class, setting new standards in productivity and off-road mobility.

RED RHINO MINI CRUSHERS UK

Red Rhino is introducing the new 5000 Plus and Screener Plus models. The latest Red Rhino 5000 Plus model is fitted with a

vibrating feeder tray and has the latest Kubota 05 Series 4-cylinder diesel engine. The Red Rhino Screener Plus is an upgraded model of the current screener which gives extended conveyors which gives increased stockpile capacity.

ROTOTILT

Rototilt says that a tiltrotator completely changes the way of using an excavator and transforms the excavator to a multi-tool carrier. Until last year, this was only possible for excavators up to 32 t. But with Rototilt's new model R9, the company says this is now also possible with excavators up to 40 t.

SMT GB

SMT is showing the new Volvo EC60E. This replaces the outgoing EC55C, and the more powerful and productive EC60E crawler excavator from Volvo Construction Equipment is built for comfortable, efficient operation in a variety of applications. This machine is described as offering improved traction, excellent swing force and high lifting capacity to achieve outstanding results, fast. With a compact design, long arm, and optional fixed boom and offset boom, the versatile and powerful EC60E is suitable for a range of applications.

TAKEUCHI

Back at the show with a new towable mini, Takeuchi's TB225 2.25 t mini machine is said to be ideal for tool hire companies looking for a towable mini that sits safely within trailer towing limits. The machine was specifically designed to meet the growing demand by rental companies who wanted a heavier Takeuchi within trailer towing weight. Available in both



Takeuchi's
TB225 2.25 t mini

cab and canopy, it powers in just under 2,400 kg (5,291 lb) cab or 2,265 kg (4,993 lb) canopy with plenty of room for extras in the trailer. The machine also comes with an integrated trailer tie-down.

TOBROCO-GIANT

The company is showing its all-rounder Giant skid steer. Whether working on construction and demolition or maintaining roads and paths, the skid steer loader cleans, sweeps and demolishes. This ultra-compact machine has a minimum width of 76 cm (30 in) built with 350 kg (771 lb) lift capacity. It can be equipped with an integrated diesel particulate filter said to reduce emissions by 90%, and for working with hydraulically driven attachments such as rotary mower, sweeper and hydraulic hammer, the machines can be equipped with a double gear pump.

TUFFTRUK

Tufftruk is bringing the new Truxtra range of award-winning battery powered mini dumpers. Compact and portable, the Truxtra Bendie allows access into the most environmentally sensitive areas allowing eight hours of continuous operation with zero emissions. The compact battery unit with an in-built charger also provides noise-free operation.

WACKER NEUSON

Wacker Neuson has exhibited at all three previous Plantworx shows and this year the DW15e electric wheeled dumper and the Dual View dumpers will be the main attractions. In addition, the complete zero emission range and the new DW30 3t dumper will be further highlights. Another new addition is the EZ17e fully electric mini excavator, that can run entirely on its battery, but can also be operated while connected to the mains – and it can even be charged while it is in operation. ■



The EZ17e mini excavator is one of a range of new products on show from Wacker Neuson



MBI[®]

ARMS YOUR FLEET FOR THE TOUGHEST MISSIONS



Mantovanibenne s.r.l.
www.mantovanibenne.com
sales@mantovanibenne.com





WORLD CONFERENCE AND AWARDS DEMOLITION SUMMIT 2019



BOOK YOUR PLACE
23-24 OCTOBER 2019
BOSTON, USA



CONFIRMED SPEAKERS

FÁBIO BRUNO PINTO

Managing director
Fábio Bruno USA

GREG MIX

Project Sponsor, Kiewit Infrastructure
West Co.

GRANT STYLES

Operations Director,
Erith Contractors Ltd.

JIM GRAHAM (SESSION CHAIRMAN)

Principal, Executive Vice President,
Winter Environmental, USA

MORE SPEAKERS WILL BE ADDED SOON,
SEE THE WEBSITE FOR UPDATES



HEADLINE SPONSOR



Volvo Construction
Equipment

GOLD SPONSORS



AWARDS RECEPTION



AWARDS TABLE WINE



SILVER SPONSORS



WELCOME RECEPTION



PAD & PEN SPONSOR



BRONZE SPONSORS



The eleventh year of the major international event celebrating excellence and innovation within the demolition industry



#worlddemolitionsummit

For online registration, visit www.demolitionsummit.com

**AWARDS
SUBMISSION
DEADLINE
30 JUNE 2019**

The venue

**Boston Marriott
Copley Place**
110 Huntington
Avenue,
Boston,
Massachusetts
02116 USA



Watch a snap shot of the 2018 event



www.demolitionsummit.com/#three



IN COOPERATION WITH



IN PARTNERSHIP WITH



CREATED AND ORGANISED BY



Epiroc said the new range combines modern design and sturdy construction



Epiroc adds bucket screeners

Germany-based manufacturer Epiroc Hydraulic Attachment Tools has expanded its portfolio with a range of bucket screeners.

The manufacturer said the BS 1600 and BS 2200 bucket screeners combine both modern design and sturdy construction.

With service weights of 1,710 kg (3,770 lb) for the BS 1600 and 2,450 kg (5,400 lb) for the BS 2200, it said the new range would bring an even more complete solution to recycling industry customers.

Gordon Hambach, global marketing

manager for the company, said: "The demands on our customers are constantly increasing and we are happy to now extend our offer with a product that we know will help them save time and make money.

"Sorting material on site really increases efficiency and the new Epiroc bucket screeners are as reliable and fast as they come."

The attachments are moved by hydraulic power transmitted via a timing belt, which does not require tensioning. Epiroc said this reliable transmission solution delivers optimum torque and reduces maintenance time. ■

Volvo goes electric

Volvo Construction Equipment (Volvo CE) unveiled an electric compact excavator and wheeled loader at Bauma.

The Sweden-based company introduced the ECR25 excavator and L25 wheeled loader as part of its new electric compact machine range.

Volvo CE said the models deliver zero exhaust emissions, significantly lower noise levels and reduced energy costs. In addition, it said the machines have improved efficiency and fewer maintenance requirements compared to their conventional counterparts.

Scott Young, Volvo CE director of electromobility and automation, said: "As the machines are electric, no particulate matter, nitrogen oxide or carbon dioxide are released into the environment. This, together with the fact that they have extremely low noise levels, makes them ideal for use in cities and densely populated areas."

The company said it will begin to launch the products in mid-2020.



The screeners can adapt to different materials

MB's new generation

MB Crusher has announced the new generation of Shafts Screeners, which are designed to reduce waste and increase the profitability on job sites and can adapt to different types of work and materials.

The company describes it as the ideal solution for users processing different kinds of waste rubble before turning it into re-usable and profitable material.

The MB-HDS screening bucket is available in four models and can be installed on excavators, diggers, mini diggers and loaders (from 5 to 35 t) to easily access and move around work sites, construction sites, areas containing large pipelines or urban areas.

Changing of the rotary shafts can be carried out anywhere as they have a centralised greasing system and all maintenance tools are inside a compartment of the shafts screener.

'World first' for CDE

CDE Global has launched the Combo – in a move it describes as being "set to revolutionise" the wet processing industry.

The patented machine – which the company says is the world's first all-in-one wet processing plant – was unveiled during Bauma in Munich, Germany, the leading trade fair for the construction machinery and materials industries.

The Combo encompasses five processes – feeding, sizing, sand washing, stockpiling and complete integrated water management.

"Combo is no ordinary machine but rather a technological response to the challenges faced by material processes," said CDE chief operating officer Sean Kerr.

"It has been designed with a focus on transferring greater reliability and efficiency benefits to customers and can be used in construction and demolition waste recycling."

Efficiency features of the Combo include modular cyclones that can be optimised,

replaceable premium wear liners throughout and rotating screen covers on spray bars.

Pre-tested and pre-wired before dispatch, the Combo arrives on site in a single unit ready to plug and play either as a standalone plant or as part of a larger turnkey solution, and can start processing within days. ■



The CDE Combo is described by its manufacturer as the first all-in-one wet processing plant in the world

Innovation continues apace for Indeco

The Indeco range of small hammers is expanding with a new product, the HP 100, the smallest in the range, which is still capable of outstanding performance. The HP 100 was designed for the increasingly popular mini-excavators from 0.7 to 0.8 t, when having to use a hammer in a restricted working area. The challenge lay in trying to make a hammer that could work with a decidedly reduced oil flow rate – from 15 l upwards – that would maintain maximum hydraulic efficiency despite weighing under 60 kg (132 lb).

The result is the HP 100, which has a larger steel diameter than hammers in the same class and what the company describes as a truly remarkable impact energy per blow, reducing demolition times and ensuring high productivity levels.

Meanwhile the IRP 5X is officially Indeco's smallest rotating pulveriser, and is tailored for smaller carrier ranges.

The company said it is far more common for contractors to be faced with a demolition job in a restricted working area, where a constant effective force can help reduce working times and maximise productivity. The success of the operation was due in part to the hydraulic cylinders which are oversized compared to the attachment, and partly to the large jaw openings.

"The IMP multiprocessor also has become



The HP100 is said to reduce demolition times and increase productivity due to its impact energy

even more efficient, and we have brought in a new dust abatement system," said marketing manager Michele Vitualano. ■

Metso in multiple unveil

Finland-based crushing and screening specialist Metso unveiled four new products at this year's Bauma in what it described as its biggest launch in decades.

The products included the latest Lokotrack

Urban series crushing and screen model (LT96); the Lokotrack ST2.3 mobile multi-use screen for entry-level businesses; and the MX3 cone crusher, termed the "little brother" of the MX4 which was launched at Conexpo two years ago.

Completing the set was a hybrid truck body for more cost-effective hauling.

Kimmo Antilla, vice president Lokotrack solutions for aggregates, business and product management, said the LT96 Urban joined the LT106, LT120 and LT130 Urban versions to provide a portfolio featuring the patented Urban noise and dust control, which makes it suitable for work in city centres.

The Lokotrack ST2.3 screen is suitable for a range of applications from multi-use to fine screening and recycling and according to Metso can be easily moved from one site to another using standard trailers in most cases.

It is expected that the product will be commercially available from 2020.

The Lokotrack ST2.3 has the robust Lokotrack-grade design and is suitable for standalone and multistage applications.

Service and support for the product are provided by the extensive global Metso and distributor network.

The MX3 cone crusher can provide

Tyrolit makes MoveSmart connection

Tyrolit, an Austria-based construction tool firm, is working closely with Viennese start-up company ToolSense and German telecommunications company Deutsche Telekom to connect construction machines together digitally.

The new system has been developed for the manufacturer or equipment hirer to see the location of machines and how long they have been in use.

Tyrolit said that the MoveSmart Technology is all about connectivity, and now customers will be able to connect to their tools being used in the industry from their office.

In this new system the tool sends important information such as localisation data, operating hours, service times and error reports to enable smoother and smarter operation.

The MoveSmart Technology is said to help to plan more efficiently as well as to better understand processes and improve machine utilisation.

This also has a significant impact on the rental industry as it offers assurance and protection to both parties, where proper usage of the machinery can be determined.

The WSE1621 saw is the first of its kind to use the smart technology while it also features in the smaller WSE811 MKII. The saw is constructed from particularly lightweight system components, as well as numerous digital equipment attributes, which collect important data for optimal operation.



The MX3 'little brother' crusher

throughput of 420 t/hr and Arto Halonen, vice president of the crushers and aggregates business area in Metso, said it was suitable for second, third and fourth crushing stages. ■

More power with Brokk

Brokk, a leading manufacturer of remote-controlled demolition machines, has released a new demolition robot said to have 40% more hitting power.

The 520D model, which replaces the Brokk 400D, meets both Tier 4 Final and the European Stage IV emission standards. Complete with increased hydraulics, a heavy-duty boom and a three-part arm that extends 6.7 m (22 ft) horizontally and 7 m (23 ft) vertically, the 520D can deliver 1,472 Nm (1,086 ft/lb) per blow.

“Demand for diesel-powered machines has grown in recent years, especially from construction and demolition contractors who often need the extra power diesel-fueled machines can provide,” said Martin Krupicka,

Brokk group CEO. The company also said that the 520D is one of the most eco-friendly demolition robots on the market today.

The model includes a remote-control box with a working radio range of 300 m (984 ft) and is compatible with all Brokk 400 and 500 model attachments.

No bigger than its predecessor, the 520D has 70% fewer cables.

At the recent Bauma exhibition in Germany, the company also launched the Brokk 70.

The Brokk 70 comes with several brand new attachments. The BHB105 breaker weighs more than 100 kg (220 lb) and the Brokk BDC40 drum cutter adds cutting power, but the product itself keeps the same compact dimensions as its predecessor.



The new 520D replaces the Brokk 400D



The K350+ features a 10% capacity increase compared to its predecessor

Expansion time for Johnson

Johnson Crushers International has expanded its Kodiak Plus cone crusher series with the K350+. This mid-range model is said to offer higher production with a smaller footprint.

Compared to the K300+, the K350+ features increased drive train, stroke, horsepower, weight, head diameter and hold-down force, resulting in a capacity increase of up to 10%.

With the same bolt pattern, the new cone can be mounted in most current K300+ applications.

“We have been testing the K350+ for a few years, especially on portable plants, and it has far surpassed our expectations. We are excited to release the K350+ to the market,” said product manager Ian Pendergrass.

Like other cones in the Kodiak Plus series, the K350+ features a tramp iron relief system, fully-protected internal counterweights, precision roller bearing design, patented liner retention system and 360° thread locking ring for consistent product quality.

X Series up and running

JCB has launched its 13 to 16 t X Series excavators for ground working specialists. They will be shown at the forthcoming Plantworx exhibition alongside the 19C-1E electric mini excavator.

Joining the 210X and 220X models launched last year, JCB said the 131X, 140X and 150X models feature the X Series hallmarks of robust durable design, increased productivity and improved operator comfort and ease of use.

Key features include a wider operator cab for all-day comfort; in cab noise reductions of up to 68%; modern styling with durable strike points to reduce total ownership cost and increased diameter high-flow pipework to boost efficiency. The two larger models also deliver a 6% improvement in tonnes per litre.

Chief innovation and growth officer Tim Burnhope said: “The 210X and 220X have already delivered on customers’ demands for greater levels of strength, durability, comfort, ease of use, reliability, efficiency, productivity and serviceability in the 20 t sector, so we are delighted to bring this new level of detail to our 13 and 16 t models.”

The fully electric 19C-1E mini excavator will allow contractors to work inside buildings and in emissions-sensitive inner-city

environments or underground without having to install costly exhaust extraction equipment.

Using automotive battery technology, the 19C-1E will deliver the performance of a conventional diesel-powered 1.9 t mini excavator with a reduction of both internal and external noise levels. Contractors will also be able to work after normal hours in urban streets without disturbing residents, as well as in other noise-sensitive environments near hospitals and schools.



The 150X, one of three machines added to the X Series

JSC looks west with hammers

Korean manufacturer JSC is targeting the European market with its Ares series hammers, which were displayed at Bauma recently.

The products were introduced in 2017 to work in extreme sites and after proving themselves in Korea and China, they are now being aimed at other Asian countries and the USA as well as the European continent.

JSC is currently developing technology for excellent performance with low noise and vibration levels in small size hammers, which is 85 dB or less noise level at 7 m (23 ft) point away from a working place and it is expected to be introduced in the European and North American markets in 2020.

DEMOLITION EXPO

4th - 6th July 2019
Hertfordshire Showground
www.demoexpo2019.com

Get Your E-Ticket Now!



Headline Sponsors



Gold Sponsors



Silver Sponsors
WILLOW HIRE



LAST OPPORTUNITIES TO EXHIBIT! Call 01442 217 144 (Option 1) to book your space.

REGISTER FOR THE **FREE** DIGITAL ISSUE

Delivered instantly
anywhere in the
world

- Interactive
- Searchable
- Archiveable



For more details and to register for your own, **FREE**, digital copies go to:
www.khl.com



INFORMATION THAT BUILDS AND POWERS THE WORLD

www.khl.com

Small shear, big result

When specialist contractor Kent Demolition approached Inmallo for a small shear which could work in a confined internal space on a 2.4 t mini excavator, it knew that there would be some serious modifications required.

This MBI SH25 shear is normally fitted to 5-7 t machines, however Inmallo's engineering team modified the Takeuchi

TB23R by removing the dipper arm and manufacturing its own custom bracket to hold the shear directly to the boom. This also involved fitting a new auxiliary hydraulic circuit and re-mapping the hydraulic system to the excavator controls to provide the full 360° rotation and control functionality of the tool.

"We're not averse to these technical and mechanical challenges and our engineering team will try to find a solution which brings together the right tool for the right machine," said Inmallo's Charles Polak.

"Kent Demolition had carrier limitations as well as the confined working area within a retail store, so weight and size was an issue from the start.

"The challenge was to develop a suitable platform which wouldn't compromise the power and size of the shear required to complete the job."



Inmallo modified a Takeuchi machine for Kent Demolition.

United Kingdom-based Kent Demolition is a full service contractor whose project experience includes industrial plant, factories, houses, hotels, lift shafts and office blocks in the south east of England. ■



Garic welfare facilities at the Coleman site

Garic units support Coleman

Welfare and site equipment provider Garic has been contracted to supply a specialist solution for part of a city centre demolition project in Birmingham, United Kingdom.

Demolition firm Coleman & Company is scheduled to take down a 10-storey former Royal Mail building for a local property developer, in preparation for a new 14-storey apartment block.

The building is located adjacent to one of the city's busiest streets, close to a large shopping and office development. Demolition of the structure is expected to take 40 weeks to complete and requires dedicated welfare facilities.

Sophie Rolfe, Garic's regional account manager said: "Because the site is restricted Coleman needed comprehensive but integrated welfare facilities. Our combi cabins are ideal because they have canteens, offices, toilets and drying rooms all in one unit. They are designed to be completely self-contained so Coleman doesn't need to connect water and power supplies."

Manufactured in the United Kingdom, Garic's combi cabin series site welfare units can seat up to eight staff.

First Volvo for Total Reclaims Demolition

United Kingdom-based Total Reclaims Demolition (TRD) has added the Volvo EC300E to its fleet.

The new excavator was delivered to the company in full factory-fitted secondary demolition specification, which included heavy-duty belly guards, side impact protection rails and heavy-duty guarding for boom and bucket cylinders.

According to distributor SMT, introducing the 30 t machine to TRD's fleet was a change to the brands the company usually operates.

Melvyn Cross Jr, TRD managing director, said: "We certainly liked the look of the Volvo offering in terms of the machine's build quality and aesthetics. We've also had some

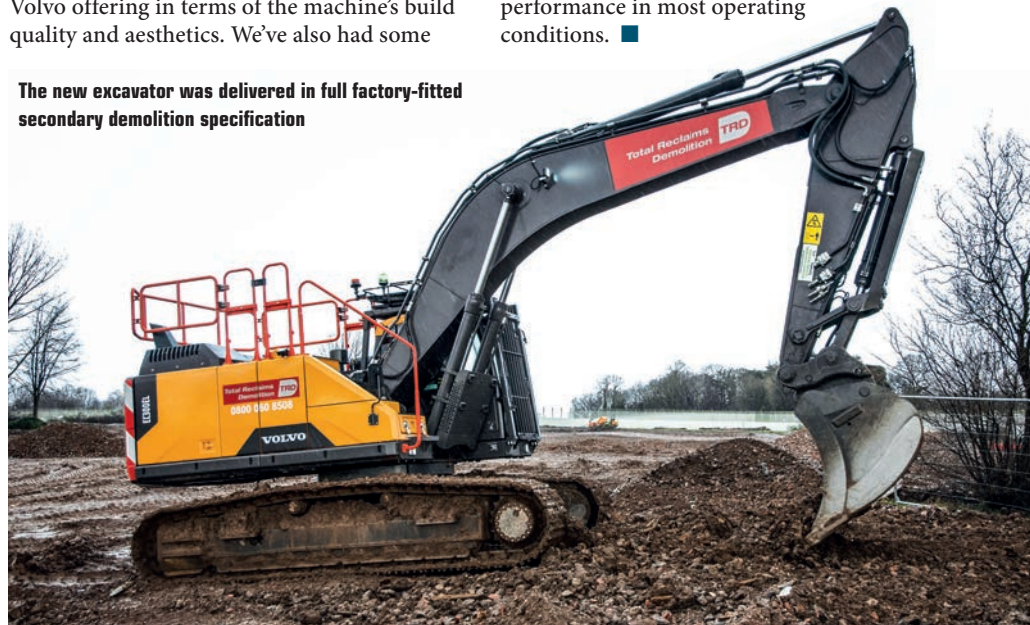
experience in operating them when we've had to hire equipment in and, together with a favourable package on offer including a service agreement and extended warranty, decided to try the EC300E for the first time."

The Volvo machine is powered by a six-cylinder engine and has a selection of different working modes that include, I-idle, F-fine, G-general, H-heavy and P-power.

It can set the appropriate engine speed for the work mode and also has an Eco-mode that can operate in the general to heavy modes.

According to Volvo this provides better fuel efficiency without a loss of performance in most operating conditions. ■

The new excavator was delivered in full factory-fitted secondary demolition specification



JPE Aggregates sees savings grow with Komtrax

Komtrax is a free to use machine monitoring system fitted as standard into all new Komatsu equipment. The company says that it allows users to monitor all the essential information about their machine directly on their computer, smartphone or tablet.

JPE Aggregates' Shire Oak Quarry, located in Walsall, United Kingdom, has a fleet made up entirely of Komatsu machines. This consists of wheeled loaders, bulldozers, dump trucks and excavators, including three Komatsu hybrids.

After taking over as site manager in January 2018, Peter Perryman, was determined to find ways to improve the site.

Soon afterwards, Richard Mayrick, Marubeni-Komatsu product support representative, started sending monthly eco reports of the fleet. In June, he started to thoroughly analyse the Komtrax reports to review all the machines' performance and efficiency and then made recommendations on areas that needed improvement.

The first thing Richard discovered was the machines spent more than 70% of the time in P-mode, which is said to be unnecessary and only required when operators need a slight power boost.

The operators were asked to only use P-mode when required, and this simple change resulted in the machines working in E-mode over 75% of the time. In this first month of switching to E-mode approximately £3,000 (US\$4,000) of fuel was saved.

The second thing Richard identified was the high idling time of the whole fleet. Over 300 hours were lost each month as machines sat idling.

In August the fleet spent a total of 546

hours idling, but two months later the total was 229 hours – an improvement of over 50%.

Another interesting benefit to the machines using E-mode and reducing idling time, is that the diesel particulate filters (DPF) on the machines are running more efficiently.

“There appears to be a misconception within the industry where people believe that machines must be running at high temperatures and power for the DPF to work efficiently,” said Richard.

“The results at JPE disregard this belief as the machines are now running at a more constant power and the DPF is running perfectly fine.”

At the beginning of the project Richard was compiling the reports but he has now taught Peter and his colleagues to effectively use Komtrax independently.

They now spend just 90 minutes per week producing and analysing the reports.

“We really think all companies who own Komatsu machines should be buying into it the technology and learning how Komtrax can save them money,” said Peter.

“Once set up it takes very little time out of our week and we have already managed to save an impressive amount of money. Richard has been a great help and it's just one of the ways Marubeni-Komatsu adds value to their machines.”

JPE has been reducing its idling times and using E-mode more frequently for 12 months now and is already seeing the savings. So far, it has managed to save between nearly £40,000 (\$52,000). And JPE is continuing to work with Richard to find other ways in which the company can save money. The next task is to analyse its use of ground engaging tools which can increase productivity. ■



Meyer makes major order for Liebherrs

At Bauma 2019, earthworks specialist Meyer Erdbau decided to purchase five Liebherr Generation 8 crawler excavators. The German company is located in the state of Brandenburg and is active in Berlin. One R 926, one R 930 and three R 938s will be added to the company's fleet in the region.

The company was convinced in particular by the advice it received from the sales and technical office of Liebherr.

These machines are equipped with an undercarriage with 3 m (10 ft) wide monoblock boom, as well as the Likifix quick coupler system.

The photo taken at Bauma in Munich shows (from left): Koessinger Frederik (Liebherr Hydraulikbagger); Till Triqueneaux (Liebherr France); Marcus Morgner (Liebherr-Baumaschinen Vertriebs- und Service GmbH in Berlin); Thomas Meyer (Meyer Erdbau); Jan Liebherr (Liebherr International); Martin Schickel (Liebherr France) and Ulrich Klar (Liebherr-Baumaschinen Vertriebs- und Service).

Marubeni-Komatsu has helped JPE Aggregates reduce idling times on equipment



DOMADVERTISING.COM

SaMoTer

31ST INTERNATIONAL CONSTRUCTION EQUIPMENT TRADE FAIR

VERONA, ITALY
21.25 MARCH 2020

#FOLLOWTHEBEAT

SAMOTER.COM

THE HEART OF CONSTRUCTION EQUIPMENT
PULSES IN ITALY

PARTNER



CO-LOCATED WITH



VERONAFIERE.IT



Organized by
veronafiery
Trade shows & events since 1898

DUST CONTROLLER



GAS, DIESEL & ELECTRIC MODELS



GET CONTROL (716) 592-2700 • BuffaloTurbine.com



THOMAS TURTON

CONTRACTORS & DEMOLITION TOOLS

THOMAS TURTON
A LEADING MANUFACTURER OF TOOLS
FOR MORE THAN ONE HUNDRED YEARS



CONTRACTORS' TOOLS

DEMOLITION TOOLS



WWW.THOMAS-TURTON.CO.UK

TEL: +44 (0) 1246 290 000

Construction 2020 was organised by the European Commission

EDA participates in Construction 2020

The European Demolition Association participated in the seventh meeting of the High Level Tripartite Strategic Forum on Construction 2020, which took place in Brussels, Belgium, in April.

The meeting, organised by the European Commission, focused on “strategy for the sustainable competitiveness of the

construction sector and its enterprises” and established the priority areas and actions that will serve as the base for the future of the strategy beyond next year.

Members of the panel talked about the achievements and the visibility of outcomes and gave their opinions and expertise about the initiative “a built environment for people”,

a vision for the future of construction and the built environment. The possible scope of this initiative and the expectations of it were discussed at the meeting, as well as the role and contribution from the construction sector.

The aim of this meeting is to develop a common vision for improving the European Union built environment. ■

Change and the circular economy

The Japan Demolition Contractors Association (JDCA) and the EDA will share their expertise in demolition, decontamination and recycling in an international conference on enabling change and the circular economy conference, a meeting organised with the collaboration of the EU-Japan Centre for Industrial Cooperation.

The event will begin with a welcome by

representatives of Japanese entities, such as the EU-side general manager of the EU-Japan Centre for Industrial Cooperation, Philippe de Taxis du Poet.

The first conferences will give an overview of the state of the demolition and waste management industry in Europe through the following topics:

- Overview of the demolition industry in Europe
- Methods of demolition of high-rise buildings
- Construction and demolition waste management in Europe.

After that, there will be a second conference session in which European and Japanese professionals will exchange their knowledge on standards and methodologies, addressing the following aspects:

- Treatment of construction by-products
- Standards and regulation for decontamination, dismantling and recycling in Europe
- Disaster response programmes and measures.

To close the event, there will be a networking opportunity to exchange impressions and make business contacts with professionals in the sector.

- For more information, please visit <http://www.europeandemolition.org/japan2019/conference>

Association of Ireland takes up membership

The Irish Association of Demolition Contractors (IADC) has become the latest member of the EDA.

The association is a national employer body representing companies in the demolition sector, and it aims to promote contractors and raise standards through training and other initiatives.

As a constituent association of Ireland’s Construction Industry Federation (CIF), its representatives sit on health and safety and construction and demolition waste sub-committees. Through the CIF, representatives lobby government to drive change and influence legislation and policies.

The CIF also provides a range of professional services and assists its members through support on safety, health and welfare, industrial relations, tendering and contractual matters and provides a range of training programmes to ensure members are skilled in their area of construction management.

EDA joins WATEC Group

The European Demolition Association took part in the WATEC Group, the International Radioactive Waste Technical Committee, held in Vienna, Austria from April 2 to 5.

The association was invited by the International Atomic Energy Agency to take part in this selective group to give their perspective on how the association can get more involved in nuclear energy.

Johan D’Hooghe, on behalf of the EDA, gave a presentation on the industry and how the association could co-operate on this topic.

The EDA said that in future it aims solve the lack of capacity in the nuclear industry and spread its knowledge about how the job would be done to create a major benefit for those contractors willing to engage in nuclear.



The EDA met with the WATEC group to discuss greater future involvement in the nuclear industry

About the EDA

The European Demolition Association (EDA) was founded in 1978 and is the European platform for national demolition associations, demolition contractors and suppliers. It organises annual events to bring together the demolition industry from all over Europe. The most important one is the Annual Convention, a meeting that includes technical presentations about key topics as well as optional leisure activities. The EDA represents thousands of companies through its national associations and direct memberships. D&Ri is the international media partner of the EDA.

- For more details, please visit: www.europeandemolition.org



Stopping for a chat with the teenage me

Richard Vann, managing director of the RVA Group, compares demolition with how it looked when he was school-leaving age. Thus informed, he considers what advice he would give to youngsters starting out in the industry today and how he would sell a long-term career to them.

It may be an obvious statement to make – as every profession inevitably changes over time – but a career in demolition now looks significantly different from how it did when I was 16.

Gone are the days when an itinerant workforce waited to be picked up at a bus stop for cash-in-hand work that would tide them over for a few days.

Demolition was something of a dirty word then. It wasn't considered to offer a serious career path – it was simply a job for people who didn't have many other options. Or perhaps, for a select few, if their father had worked in the industry before them.

There was no formal training, and certainly nothing like the continuing professional development we know now.

You would climb a chimney one day, learn how to operate an excavator the next, and then move on to be a wagon banksman.

KNOWLEDGE TRANSFER

Fast forward to 2019 and things have, thankfully, evolved considerably.

While demolition is not yet perfect, an ambassadorial stance amongst industry professionals has served to stamp out unsavoury practices. International conferences now seek to shine a light on best practice, and knowledge transfer is commonplace. Formalised training options are plentiful, and potential career paths are rich and varied.

So, what would I say to a 16-year-old starting out in this industry?

Firstly, I'd ask them what it is about demolition that interests them? Of all the engineering disciplines they could go into, why this one? These reasons and subsequent discussions could shape their future, so it's important to acknowledge the drivers for their intended career.

Demolition is a small and specialist area of

civil engineering, but there are many varied job roles the 16-year-old could aspire to hold. Does the design of demolition projects excite them, or the management of complex on-site programmes? Is it the practical side of demolition execution, such as driving plant, that they are eager to learn? Or are they an aspiring structural engineer?

They could have a particular interest in explosives, perhaps – and surely nobody would deny the fact that we need far more people with this niche area of expertise. Are they passionate about minimising the environmental impact of demolition schemes? Or has the containment of hazardous materials captured their curiosity?

If our 16-year-old doesn't know that all these options exist, we need to be telling more young people about them. A career in demolition can be challenging, exciting and fulfilling. Yes, the job is a little tougher when it involves a 4am start, or a day spent out in the chilling wind and rain. But it is a growing market, globally, and much-needed skill-sets are in decline. So now, more than ever, is a perfect time to enter the industry.

CONTINUED AMBITION

Some 16-year-olds will be very focused on the here and now, and we should never be too quick to criticise anyone who simply wants to enjoy the present. But for those who do consider where their career could take them, I don't think they'll be disappointed.

They could arm themselves with a raft of professional qualifications for instance. One guy I know is currently studying for an MBA with the Open University while running a huge demolition programme in the north west of England. He already has an established skill-set and an impressive CV but he is hungry to develop, and we should welcome this continued ambition.

Our 16-year-old may spot a new market

opportunity of course, that as yet remains untapped. For me, the introduction of Construction (Design and Management) regulations in 1992 prompted the birth of RVA Group. But what else will the future hold for demolition entrepreneurs?

I would like to see more explosives engineers. I'd like more demolition professionals to export their expertise worldwide, to foster truly cross-cultural best practice irrespective of location.

I'd like to see us harness more technologies to further strengthen safety standards on sites that are inherently hazardous. To see more diversity and equality within the workforce.

And I'd like the industry to better engage with young people so that they struggle to find a reason not to enter the demolition profession.

So, how many 16-year-olds do we know who would fit perfectly into our world? Or perhaps who could mix it up entirely? ■

“ A career in demolition can be challenging, exciting and fulfilling. Yes the job is a little tougher when it involves a 4am start or a day in the chilling wind and rain. But now more than ever is a perfect time to enter the industry. ”

RICHARD VANN



THINK SAFETY WORK SAFELY



EST IN 1988

WE HAVE AN ESTABLISHED PROVEN TRACK RECORD FOR BEING COMPETITIVE, EFFICIENT AND COMPLETING ALL WORKS TO AWARD WINNING STANDARDS WITH A REPUTATION TO BE PROUD OF.

- ▶ DEMOLITION
- ▶ DISMANTLING
- ▶ SOFT STRIP/REFURBISHMENTS
- ▶ FAÇADE RETENTION
- ▶ SITE CLEARANCE/BULK EXCAVATION
- ▶ LAND RECLAMATION
- ▶ ASBESTOS SURVEYS
- ▶ ASBESTOS REMOVAL
- ▶ HAZARDOUS/CHEMICAL WASTE REMOVAL
- ▶ MOBILE CRUSHING & RECYCLING
- ▶ 24 HOUR EMERGENCY CALL OUT SERVICE
- ▶ HEALTH & SAFETY TRAINING & ADVICE
- ▶ CLIENT LIAISON & FEASIBILITY STUDIES

TEL 0121 333 7999

**INFO@CITYDEMOLITION.CO.UK
WWW.CITYDEMOLITION.CO.UK**



VISIT OUR WEBSITE TO DOWNLOAD OUR INTERACTIVE BROCHURE



WE ARE AN NQA ISO 9001, ISO 14001, ISO OHSAS 18001 ACCREDITED COMPANY

WATCH OUR ONLINE VIDEOS



MB DUSTCONTROL

NEW

Inmalo are delighted to announce exclusive UK distribution of the MB Spray Cannon range.

MB have the widest range of cannons from 10m to 150m throw including self-contained and custom installations.



PROUD TO BE PLATINUM SPONSOR

for **DEMOLITION EXPO 2019**

4th-6th July
HERTFORDSHIRE SHOWGROUND



INTERNATIONAL MARKETERS (LONDON) LTD











www.inmalo.co.uk

Email: sales@inmalo.co.uk

Tel: 01962 760055








1st for HIRE & SALES of all hydraulic attachments



MTK 1st for all your attachment hire & sales needs contact our office for your quote today!

MTK (Breaker Hire & Sales) Ltd
T: 0161 225 9740
E: info@mtk-breakers.co.uk
W: www.mtk-breakers.co.uk Twitter: @MTKBreakers

VISIT OUR NEW WEBSITE

PLEASE CALL THE HIRE DESK ON 0161 225 9740 FOR COMPETITIVE HIRE RATES!





INDUSTRIAL BOILER SPECIALISTS

WANTED

Industrial Steam Boilers
Any size considered
Best prices paid

Please call or email today with details

HIRE/SALE

Storage Tanks
Water or Diesel (bunded)
Range of sizes

Let Kings solve your storage problems

+44 (0)1992 451629
sales@kingsboilerhire.com





Cut Suspended Ceiling Wires Safely!

While working from the floor

- ◆ Cuts 5000 sq ft per hour
- ◆ Constructed out of light-weight, Heavy Duty Aircraft Aluminum with replaceable, long lasting, heat treated, tool steel cutting blades

Reaches 20 ft High!

25 Years in Business! www.ceilingdemo.com

— DISCOVERING THE FUTURE —
PROFESSIONAL ENGINEERING CO., INC.
 110 Ferry Street, Lawrence, MA 01841 • (+1) 978 688 2064




120 dB(A)
Shouting

© oilly / Fotolia.com

We've got something against noise!

Darda Concrete Crushers are more quiet, efficient and environmentally friendly than any standard demolition equipment.

For you that translates into: less noise, satisfied customers and more business!



82 dB(A)
Darda Concrete Crusher

PLANTWORX
11th-13th JUNE 2019
YOUR CONSTRUCTION SHOW

Visit our distributor
BROKK UK
 Stand B6

Find out more about our low-noise demolition methods and visit us at the stand of Brokk UK at Plantworx!

Darda GmbH
 Germany
 T +49 7702 4391-0
www.darda.de

darda
We've got the power.



Don't miss the opportunity to advertise in the next issue

Please contact:
 Eleanor Shefford
 Tel: (0)1892 786236
 Fax: (0)1892 786258
 E-mail: eleanor.shefford@khl.com

OR REGISTER ONLINE AT: www.khl.com/subs/DRI

1 CHOOSE YOUR MAGAZINE/S

- Demolition & Recycling International*
- Access International*
- Access, Lift & Handlers*
- American Cranes & Transport*
- Construction Europe*
- Construction Latin America*
- International Construction*
- International Construction Turkey (Turkish)*
- International Cranes and Specialized Transport*
- International Rental News*
- Cranes & Project Transport Turkey (Turkish)*

2 CHOOSE YOUR E-NEWSLETTER/S

- Demolition & Recycling International*
- Access International*
- Access, Lift & Handlers*
- Construction Latin America*
- International Construction China (Chinese)*
- International Rental News*
- World Construction Week*
- World Crane Week*

3 ORGANISATION TYPE

- Specialist Demolition Contractor
- General Contractor
- Equipment Rental
- Consultant/Planner
- Recycling Waste Specialist
- Government (Demolition/Public Procurement)
- Offshore Company
- Property/Development/Owner
- Public/Private Utilities
- Distributor / Agent / Equipment Sales
- Concrete Cutting/Sawing
- Manufacturer
- Other (Please specify): _____

4 YOUR DETAILS

Name: _____

Job title: _____

Company: _____

Address: _____

Town: _____

Country: _____

County/State: _____

Post code/Zip code: _____

e-mail: _____

5 Do you purchase or influence the purchase of construction equipment or services?

YES NO

6 What is the annual turnover of your company (US\$ millions):

Under \$1 million \$1-3million

\$3-5million \$5-20million

\$20-100million Over \$100 million

7 FORMAT OF MAGAZINE

PRINT DIGITAL PRINT & DIGITAL

8 YOUR PREFERENCES

KHL Group Ltd will keep you up to date with industry insight, products and events relevant to you as a professional in the construction or power industry. If you do not wish to receive such information, please tick the selected boxes below.

e-mail Telephone Post

KHL works with other companies in the construction and power industry and will contact you about their products and services.

I would like to receive e-mails from KHL about other third party products

All e-mails will contain a link in the footer to enable you to unsubscribe at any time. For more information, please see our Privacy Policy: www.khl.com/privacy-policy

9 SIGN AND DATE:

SIGNATURE: _____

DATE: _____

POST TO: KHL Group,
Circulation, Southfields, Southview Road,
Wadhurst, East Sussex, TN5 6TP, UK
E-MAIL: circulation@khl.com





» 4 t at 36 m

PRECISE DEMOLITION

MODERN LONGFRONT-DEMOLITION MATERIAL HANDLER

870E



Telehandler 5,5 t Balancer 130-300 t Material Handling 17-160 t Duty Cycle Crane 13,5-300 t Crawler Crane 50-300 t Telescopic Crane 16-120 t Mobile Harbour Crane 300 t



SENNEBOGEN
Maschinenfabrik GmbH

Sennebogenstraße 10
94315 Straubing

↪ alfred.endl@sennebogen.de



Stage V performance where you need it most

The **new Perkins® Syncro** engine offers a range of flexible and modular 2.8 and 3.6 litre platforms (45 to 100 kW).

With compact engine mounted aftertreatment, this allows Original Equipment Manufacturers to reduce their engineering and total machine cost.

With you
at every stage



www.perkins.com/stagev

 **Perkins®**

THE HEART OF EVERY GREAT MACHINE